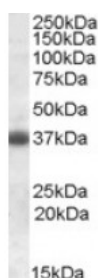




Clusterin Antibody

CATALOG NUMBER: 46-749



Western blot analysis of Clusterin in rat brain lysate (35 ug protein in RIPA buffer) using Clusterin Antibody at 1 ug/mL.

Specifications

SPECIES REACTIVITY:	Mouse, Rat
TESTED APPLICATIONS:	ELISA, WB
APPLICATIONS:	ELISA: Antibody detection limit dilution 1:8,000. Western Blot: Approximately 37 kDa band observed in mouse brain and testis lysates and in rat brain and ovary lysates (calculated MW of 51.6 kDa according to mouse NP_038520.1). The observed molecular weight corresponds to earlier findings in literature with different antibodies (Miyata et al, Circulation. 2001 Sep 18;104 (12) :1407-12.; PMID: 11560857). Recommended concentration: 0.3-1 ug/mL.
POSITIVE CONTROL:	1) Cat. No. 1463 - Rat Brain Tissue Lysate
IMMUNOGEN:	Clusterin antibody was raised against a 14 amino acid synthetic peptide near the C-Terminus of Clusterin.
HOST SPECIES:	Goat

Properties

PURIFICATION:	Clusterin antibody was purified from goat serum by ammonium sulphate precipitation followed by antigen affinity chromatography using the immunizing peptide.
PHYSICAL STATE:	Liquid
BUFFER:	Clusterin antibody is supplied in Tris saline, 0.02% sodium azide, pH 7.3 with 0.5% bovine serum albumin.
CONCENTRATION:	500 ug/mL
STORAGE CONDITIONS:	Aliquot and store at -20°C. Minimize freezing and thawing.
CLONALITY:	Polyclonal
CONJUGATE:	Unconjugated

Additional Info

ALTERNATE NAMES:	Clu, clusterin, AI893575, ApoJ, Cli, D14Ucla3, SP-40, Sgp-2, Sgp2, Sugp-2, Apolipoprotein J, complement lysis inhibitor, testosterone repressed prostate message, Apoj, Msgp-2
ACCESSION NO.:	NP_038520.1
PROTEIN GI NO.:	7304967
OFFICIAL SYMBOL:	Clu

GENE ID: 12759 (mouse); 24854 (rat);

Background

REFERENCES: 1) Charnay Y, Imhof A, Vallet PG, Hakkoum D, Lathuillier A, Poku N, Aronow B, Kovari E, Bouras C, Giannakopoulos P. Clusterin expression during fetal and postnatal CNS development in mouse. Neuroscience. 2008 Jun 17.

FOR RESEARCH USE ONLY

December 13, 2016