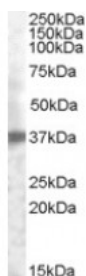




TROP2 Antibody

CATALOG NUMBER: 46-736



Western blot analysis of TROP2 in human prostate lysate (35 ug protein in RIPA buffer) using TROP2 Antibody at 0.2 ug/mL.

Specifications

SPECIES REACTIVITY:	Human
TESTED APPLICATIONS:	ELISA, WB
APPLICATIONS:	ELISA: Antibody detection limit dilution 1:4,000. Western Blot: Approximately 37 kDa band observed in human prostate lysates (calculated MW of 35.7 kDa according to NP_002344.2). Recommended concentration: 0.2-0.5 ug/mL.
POSITIVE CONTROL:	1) Cat. No. 1312 - Human Prostate Tissue Lysate
IMMUNOGEN:	TROP2 antibody was raised against a 16 amino acid synthetic peptide near the internal region of TROP2.
HOST SPECIES:	Goat

Properties

PURIFICATION:	TROP2 antibody was purified from goat serum by ammonium sulphate precipitation followed by antigen affinity chromatography using the immunizing peptide.
PHYSICAL STATE:	Liquid
BUFFER:	TROP2 antibody is supplied in Tris saline, 0.02% sodium azide, pH 7.3 with 0.5% bovine serum albumin.
CONCENTRATION:	500 ug/mL
STORAGE CONDITIONS:	Aliquot and store at -20°C. Minimize freezing and thawing.
CLONALITY:	Polyclonal
CONJUGATE:	Unconjugated

Additional Info

ALTERNATE NAMES:	TACSTD2, tumor-associated calcium signal transducer 2, EGP-1, GA733, GA733-1, M1S1, TROP2, epithelial glycoprotein-1, membrane component, chromosome 1, surface marker 1 (40kD glycoprotein, identified by monoclonal GA733)
ACCESSION NO.:	NP_002344.2
PROTEIN GI NO.:	166795236
OFFICIAL SYMBOL:	TACSTD2

GENE ID: 4070

Background

REFERENCES: 1) Shimada A, Kano J, Ishiyama T, Okubo C, Iijima T, Morishita Y, Minami Y, Inadome Y, Shu Y, Sugita S, Takeuchi T, Noguchi M. Establishment of an immortalized cell line from a precancerous lesion of lung adenocarcinoma, and genes highly expressed in the early stages of lung adenocarcinoma development. Cancer Sci. 2005 Oct;96(10):668-75.

FOR RESEARCH USE ONLY

December 13, 2016