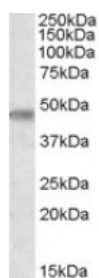




## SRCASM Antibody

CATALOG NUMBER: 46-719



Western blot analysis of SRCASM in human cerebellum lysate (35 ug protein in RIPA buffer) using SRCASM Antibody at 0.3 ug/mL.

### Specifications

<b>SPECIES REACTIVITY:</b>	Human
<b>TESTED APPLICATIONS:</b>	ELISA, WB
<b>APPLICATIONS:</b>	ELISA: Antibody detection limit dilution 1:64,000. Western Blot: Approximately 48 kDa band observed in human cerebellum lysates (calculated MW of 53.0 kDa according to NP_005477.1). Recommended concentration: 0.3-1 ug/mL.
<b>POSITIVE CONTROL:</b>	1) Cat. No. 1362 - Human Cerebellum, Left Lysate Cat. No. 1363 - Human Cerebellum, Right Lysate
<b>IMMUNOGEN:</b>	SRCASM antibody was raised against a 15 amino acid synthetic peptide near the internal region of SRCASM.
<b>HOST SPECIES:</b>	Goat

### Properties

<b>PURIFICATION:</b>	SRCASM antibody was purified from goat serum by ammonium sulphate precipitation followed by antigen affinity chromatography using the immunizing peptide.
<b>PHYSICAL STATE:</b>	Liquid
<b>BUFFER:</b>	SRCASM antibody is supplied in Tris saline, 0.02% sodium azide, pH 7.3 with 0.5% bovine serum albumin.
<b>CONCENTRATION:</b>	500 ug/mL
<b>STORAGE CONDITIONS:</b>	Aliquot and store at -20°C. Minimize freezing and thawing.
<b>CLONALITY:</b>	Polyclonal
<b>CONJUGATE:</b>	Unconjugated

### Additional Info

<b>ALTERNATE NAMES:</b>	TOM1L1, target of myb1 (chicken)-like 1, SRCASM, Src activating and signaling molecule, target of myb 1-like 1, target of myb1-like 1
<b>ACCESSION NO.:</b>	NP_005477.1
<b>PROTEIN GI NO.:</b>	4885639
<b>OFFICIAL SYMBOL:</b>	TOM1L1

---

**GENE ID:** 10040

---

**Background**

**REFERENCES:** 1) Pulitzer M, Li W, Hanson M, Singh F, Elenitsas R, Gelfand JM, VanVoorhees A, Seykora JT. Srcasm overexpression in psoriasis-insights into pathogenesis. J Cutan Pathol. 2007 Feb;34(2):160-5.

---

**FOR RESEARCH USE ONLY**

December 13, 2016