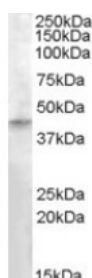




## RASSF8 Antibody

CATALOG NUMBER: 46-706



Western blot analysis of RASSF8 in human testis lysate (35 ug protein in RIPA buffer) using RASSF8 Antibody at 0.3 ug/mL.

### Specifications

<b>SPECIES REACTIVITY:</b>	Human
<b>TESTED APPLICATIONS:</b>	ELISA, WB
<b>APPLICATIONS:</b>	ELISA: Antibody detection limit dilution 1:128,000. Western Blot: Approximately 40-45 kDa band observed in human testis lysates (calculated MW of 45.4 kDa according to NP_009142.2). Recommended concentration: 0.3-1 ug/mL.
<b>POSITIVE CONTROL:</b>	1) Cat. No. 1313 - Human Testis Tissue Lysate
<b>IMMUNOGEN:</b>	RASSF8 antibody was raised against a 12 amino acid synthetic peptide near the internal region of RASSF8.
<b>HOST SPECIES:</b>	Goat

### Properties

<b>PURIFICATION:</b>	RASSF8 antibody was purified from goat serum by ammonium sulphate precipitation followed by antigen affinity chromatography using the immunizing peptide.
<b>PHYSICAL STATE:</b>	Liquid
<b>BUFFER:</b>	RASSF8 antibody is supplied in Tris saline, 0.02% sodium azide, pH 7.3 with 0.5% bovine serum albumin.
<b>CONCENTRATION:</b>	500 ug/mL
<b>STORAGE CONDITIONS:</b>	Aliquot and store at -20°C. Minimize freezing and thawing.
<b>CLONALITY:</b>	Polyclonal
<b>CONJUGATE:</b>	Unconjugated

### Additional Info

<b>ALTERNATE NAMES:</b>	RASSF8, Ras association (RalGDS/AF-6) domain family 8, C12orf2, HoJ-1, carcinoma associated HOJ-1
<b>ACCESSION NO.:</b>	NP_009142.2
<b>PROTEIN GI NO.:</b>	23503243
<b>OFFICIAL SYMBOL:</b>	RASSF8
<b>GENE ID:</b>	11228

## Background

**REFERENCES:** 1) Falvella FS, Spinola M, Manenti G, Conti B, Pastorino U, Skaug V, Haugen A, Dragani TA. Common polymorphisms in D12S1034 flanking genes RASSF8 and BHLHB3 are not associated with lung adenocarcinoma risk. *Lung Cancer*. 2007 Apr;56(1):1-7. Epub 2006 Dec 27.

---

**FOR RESEARCH USE ONLY**

December 13, 2016