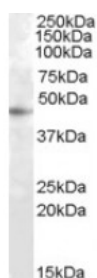




## RASSF6 Antibody

CATALOG NUMBER: 46-705



Western blot analysis of RASSF6 in HepG2 lysate (35 ug protein in RIPA buffer) using RASSF6 Antibody at 1 ug/mL.

### Specifications

<b>SPECIES REACTIVITY:</b>	Human
<b>TESTED APPLICATIONS:</b>	ELISA, WB
<b>APPLICATIONS:</b>	ELISA: Antibody detection limit dilution 1:16,000. Western Blot: Approximately 45 kDa band observed in HEPG2 lysate (calculated MW of 43.4 kDa according to NP_958834.1). Recommended concentration: 1-3 ug/mL.
<b>POSITIVE CONTROL:</b>	1) Cat. No. 1211 - HepG2 Cell Lysate
<b>SPECIFICITY:</b>	This antibody is expected to recognize both reported isoforms (NP_803876.1; NP_958834.1).
<b>IMMUNOGEN:</b>	RASSF6 antibody was raised against a 14 amino acid synthetic peptide near the internal region of RASSF6.
<b>HOST SPECIES:</b>	Goat

### Properties

<b>PURIFICATION:</b>	RASSF6 antibody was purified from goat serum by ammonium sulphate precipitation followed by antigen affinity chromatography using the immunizing peptide.
<b>PHYSICAL STATE:</b>	Liquid
<b>BUFFER:</b>	RASSF6 antibody is supplied in Tris saline, 0.02% sodium azide, pH 7.3 with 0.5% bovine serum albumin.
<b>CONCENTRATION:</b>	500 ug/mL
<b>STORAGE CONDITIONS:</b>	Aliquot and store at -20°C. Minimize freezing and thawing.
<b>CLONALITY:</b>	Polyclonal
<b>CONJUGATE:</b>	Unconjugated

### Additional Info

<b>ALTERNATE NAMES:</b>	RASSF6, Ras association (RalGDS/AF-6) domain family 6, DKFZp686K23225, putative RAS binding protein,
<b>ACCESSION NO.:</b>	NP_803876.1, NP_958834.1
<b>PROTEIN GI NO.:</b>	29789443
<b>OFFICIAL SYMBOL:</b>	RASSF6
<b>GENE ID:</b>	166824

## Background

**REFERENCES:** 1) Allen NP, Donninger H, Vos MD, Eckfeld K, Hesson L, Gordon L, Birrer MJ, Latif F, Clark GJ. RASSF6 is a novel member of the RASSF family of tumor suppressors. *Oncogene*. 2007 Sep 13;26(42):6203-11. Epub 2007 Apr 2.

---

FOR RESEARCH USE ONLY

December 13, 2016