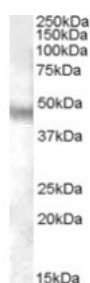




NPFFR1 Antibody

CATALOG NUMBER: 46-695



Western blot analysis of NPFFR1 in human cerebellum lysate (35 ug protein in RIPA buffer) using NPFFR1 Antibody at 0.03 ug/mL.

Specifications

SPECIES REACTIVITY:	Human
TESTED APPLICATIONS:	ELISA, WB
APPLICATIONS:	ELISA: Antibody detection limit dilution 1:64,000. Western Blot: Approximately 48 kDa band observed in human brain (cerebellum and cerebral cortex) lysates (calculated MW of 47.8 kDa according to NP_071429.1). Recommended concentration: 0.03-0.1 ug/mL.
POSITIVE CONTROL:	1) Cat. No. 1362 - Human Cerebellum, Left Lysate Cat. No. 1363 - Human Cerebellum, Right Lysate
IMMUNOGEN:	NPFFR1 antibody was raised against a 14 amino acid synthetic peptide near the internal region of NPFFR1.
HOST SPECIES:	Goat

Properties

PURIFICATION:	NPFFR1 antibody was purified from goat serum by ammonium sulphate precipitation followed by antigen affinity chromatography using the immunizing peptide.
PHYSICAL STATE:	Liquid
BUFFER:	NPFFR1 antibody is supplied in Tris saline, 0.02% sodium azide, pH 7.3 with 0.5% bovine serum albumin.
CONCENTRATION:	500 ug/mL
STORAGE CONDITIONS:	Aliquot and store at -20°C. Minimize freezing and thawing.
CLONALITY:	Polyclonal
CONJUGATE:	Unconjugated

Additional Info

ALTERNATE NAMES:	NPFFR1, neuropeptide FF receptor 1, FLJ10751, GPR147, NPFF1, NPFF1R1, OT7T022, G protein-coupled receptor 147, neuropeptide FF 1
ACCESSION NO.:	NP_071429.1
PROTEIN GI NO.:	11545887
OFFICIAL SYMBOL:	NPFFR1

GENE ID: 64106

Background

REFERENCES: 1) Gouarderes C, Mazarguil H, Mollereau C, Chartrel N, Leprince J, Vaudry H, Zajac JM. Functional differences between NPFF1 and NPFF2 receptor coupling: high intrinsic activities of RFamide-related peptides on stimulation of [35S]GTPgammaS binding. *Neuropharmacology*. 2007 Feb;52(2):376-86. Epub 2006 Sep 29.

FOR RESEARCH USE ONLY

December 13, 2016