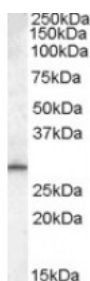




MTHFD2L Antibody

CATALOG NUMBER: 46-690



Western blot analysis of MTHFD2L in human testis lysate (35 ug protein in RIPA buffer) using MTHFD2L Antibody at 0.1 ug/mL.

Specifications

SPECIES REACTIVITY:	Human
TESTED APPLICATIONS:	ELISA, WB
APPLICATIONS:	ELISA: Antibody detection limit dilution 1:128,000. Western Blot: Approximately 28 kDa band observed in human testis lysates (calculated MW of 31.3 kDa according to NP_001004346.2). Recommended concentration: 0.1-0.3 ug/mL.
POSITIVE CONTROL:	1) Cat. No. 1313 - Human Testis Tissue Lysate
IMMUNOGEN:	MTHFD2L antibody was raised against a 13 amino acid synthetic peptide near the N-Terminus of MTHFD2L.
HOST SPECIES:	Goat

Properties

PURIFICATION:	MTHFD2L antibody was purified from goat serum by ammonium sulphate precipitation followed by antigen affinity chromatography using the immunizing peptide.
PHYSICAL STATE:	Liquid
BUFFER:	MTHFD2L antibody is supplied in Tris saline, 0.02% sodium azide, pH 7.3 with 0.5% bovine serum albumin.
CONCENTRATION:	500 ug/mL
STORAGE CONDITIONS:	Aliquot and store at -20°C. Minimize freezing and thawing.
CLONALITY:	Polyclonal
CONJUGATE:	Unconjugated

Additional Info

ALTERNATE NAMES:	MTHFD2L, methylenetetrahydrofolate dehydrogenase (NADP dependent) 2-like, FLJ13105, MGC45532, MGC72244,
ACCESSION NO.:	NP_001004346.2
PROTEIN GI NO.:	62243412
OFFICIAL SYMBOL:	MTHFD2L

Background

FOR RESEARCH USE ONLY

December 13, 2016