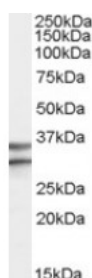




GPR3 Antibody

CATALOG NUMBER: 46-669



Western blot analysis of GPR3 in human frontal lobe lysate (35 ug protein in RIPA buffer) using GPR3 Antibody at 0.3 ug/mL.

Specifications

SPECIES REACTIVITY:	Human
TESTED APPLICATIONS:	ELISA, WB
APPLICATIONS:	ELISA: Antibody detection limit dilution 1:32,000. Western Blot: Approximately 35 kDa band observed in human brain (hippocampus and frontal cortex) lysates (calculated MW of 35.0 kDa according to NP_005272.1). Recommended concentration: 0.3-1 ug/mL.
POSITIVE CONTROL:	1) Cat. No. 1366 - Human Frontal Lobe Tissue Lysate
SPECIFICITY:	This antibody is not expected to cross-react with GPR6 and GPR12.
IMMUNOGEN:	GPR3 antibody was raised against a 10 amino acid synthetic peptide near the internal region of GPR3.
HOST SPECIES:	Goat

Properties

PURIFICATION:	GPR3 antibody was purified from goat serum by ammonium sulphate precipitation followed by antigen affinity chromatography using the immunizing peptide.
PHYSICAL STATE:	Liquid
BUFFER:	GPR3 antibody is supplied in Tris saline, 0.02% sodium azide, pH 7.3 with 0.5% bovine serum albumin.
CONCENTRATION:	500 ug/mL
STORAGE CONDITIONS:	Aliquot and store at -20°C. Minimize freezing and thawing.
CLONALITY:	Polyclonal
CONJUGATE:	Unconjugated

Additional Info

ALTERNATE NAMES:	GPR3, G protein-coupled receptor 3, ACCA, OTTHUMP00000043209, adenylylate cyclase constitutive activator
ACCESSION NO.:	NP_005272.1
PROTEIN GI NO.:	4885325
OFFICIAL SYMBOL:	GPR3
GENE ID:	2827

Background

REFERENCES: 1) Tanaka S, Ishii K, Kasai K, Yoon SO, Saeki Y. Neural expression of G protein-coupled receptors GPR3, GPR6, and GPR12 up-regulates cyclic AMP levels and promotes neurite outgrowth. J Biol Chem. 2007 Apr;282(14):10506-15. Epub 2007 Feb 6.

FOR RESEARCH USE ONLY

December 13, 2016