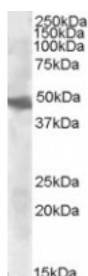




GOT2 Antibody

CATALOG NUMBER: 46-668



Western blot analysis of GOT2 in human liver lysate (35 ug protein in RIPA buffer) using GOT2 Antibody at 0.3 ug/mL.

Specifications

SPECIES REACTIVITY:	Human
TESTED APPLICATIONS:	ELISA, WB
APPLICATIONS:	ELISA: Antibody detection limit dilution 1:4,000. Western Blot: Approximately 48 kDa band observed in human liver lysates (calculated MW of 47.5 kDa according to NP_002071.2). Recommended concentration: 0.3-1 ug/mL.
POSITIVE CONTROL:	1) Cat. No. 1304 - Human Liver Tissue Lysate
IMMUNOGEN:	GOT2 antibody was raised against a 14 amino acid synthetic peptide near the internal region of GOT2.
HOST SPECIES:	Goat

Properties

PURIFICATION:	GOT2 antibody was purified from goat serum by ammonium sulphate precipitation followed by antigen affinity chromatography using the immunizing peptide.
PHYSICAL STATE:	Liquid
BUFFER:	GOT2 antibody is supplied in Tris saline, 0.02% sodium azide, pH 7.3 with 0.5% bovine serum albumin.
CONCENTRATION:	500 ug/mL
STORAGE CONDITIONS:	Aliquot and store at -20°C. Minimize freezing and thawing.
CLONALITY:	Polyclonal
CONJUGATE:	Unconjugated

Additional Info

ALTERNATE NAMES:	glutamic-oxaloacetic transaminase 2, mitochondrial (aspartate aminotransferase 2), FLJ40994, aspartate aminotransferase 2, KAT4, KATIV, mitAAT, kynurenine aminotransferase IV
ACCESSION NO.:	NP_002071.2
PROTEIN GI NO.:	73486658
OFFICIAL SYMBOL:	GOT2
GENE ID:	2806

Background

REFERENCES: 1) Teichberg VI. From the liver to the brain across the blood-brain barrier. Proc Natl Acad Sci USA. 2007 May 1;104(18):7315-6. Epub 2007 Apr 26. No

FOR RESEARCH USE ONLY

December 13, 2016