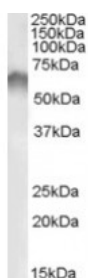


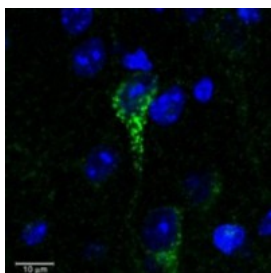


CRF Receptor Antibody

CATALOG NUMBER: 46-648



Western blot analysis of CRF Receptor in human colon lysate (35 ug protein in RIPA buffer) using CRF Receptor Antibody at 0.1 ug/mL.



Confocal image (3 um) of CRF Receptor (0.3 ug/mL) staining in green a dendrite of a neuronal cell in C57 mouse cortex. Counter-stained with DAPI (in blue).

Specifications

SPECIES REACTIVITY:	Human, Mouse
TESTED APPLICATIONS:	ELISA, IF, WB
APPLICATIONS:	ELISA: Antibody detection limit dilution 1:32,000. Western Blot: Approximately 60-70 kDa band observed in human cerebellum and human colon lysates (calculated MW of 47.7 kDa according to NP_004373.2). The observed molecular weight corresponds to earlier findings in literature with different antibodies (Xu et al, Mol Pharmacol. 2001 Mar;59 (3) :485-92; PMID: 11179443). Recommended concentration: 0.1-0.3 ug/mL. this antibody was successfully used in immunofluorescence on mouse brain at 2 ug/mL when incubated at 4C for 40h.
POSITIVE CONTROL:	1) Cat. No. 1320 - Human Colon Tissue Lysate
IMMUNOGEN:	CRF Receptor antibody was raised against an 11 amino acid synthetic peptide near the internal region of CRF Receptor.
HOST SPECIES:	Goat

Properties

PURIFICATION:	CRF Receptor antibody was purified from goat serum by ammonium sulphate precipitation followed by antigen affinity chromatography using the immunizing peptide.
PHYSICAL STATE:	Liquid
BUFFER:	CRF Receptor antibody is supplied in Tris saline, 0.02% sodium azide, pH 7.3 with 0.5% bovine serum albumin.
CONCENTRATION:	500 ug/mL
STORAGE CONDITIONS:	Aliquot and store at -20°C. Minimize freezing and thawing.
CLONALITY:	Polyclonal
CONJUGATE:	Unconjugated

Additional Info

ALTERNATE NAMES:	CRHR1, corticotropin releasing hormone receptor 1, CRF-R, CRF1, CRFR1, CRH-R1h, CRHR, CRHR1f, corticotropin releasing hormone receptor variant 1h, seven transmembrane helix receptor, CRFR
-------------------------	---

ACCESSION NO.: NP_004373.2

PROTEIN GI NO.: 19923245

OFFICIAL SYMBOL: CRHR1

GENE ID: 1394

Background

REFERENCES: 1) Rissman RA, Lee KF, Vale W, Sawchenko PE. Corticotropin-releasing factor receptors differentially regulate stress-induced tau phosphorylation. J Neurosci. 2007 Jun 13;27(24):6552-62.

FOR RESEARCH USE ONLY

December 13, 2016