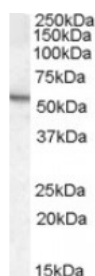




## Arylsulfatase A Antibody

CATALOG NUMBER: 46-627



Western blot analysis of Arylsulfatase A in mouse testis lysate (35 ug protein in RIPA buffer) using Arylsulfatase A Antibody at 0.5 ug/mL.

### Specifications

<b>SPECIES REACTIVITY:</b>	Mouse
<b>TESTED APPLICATIONS:</b>	ELISA, WB
<b>APPLICATIONS:</b>	ELISA: Antibody detection limit dilution 1:32,000. Western Blot: Approximately 55 kDa band observed in mouse testis lysates (calculated MW of 53.6 kDa according to human NP_000478.2 and 53.7 kDa according to mouse NP_033843.2). Recommended concentration: 0
<b>POSITIVE CONTROL:</b>	1) Cat. No. 1416 - Mouse Testis Tissue Lysate
<b>IMMUNOGEN:</b>	Arylsulfatase A antibody was raised against a 12 amino acid synthetic peptide near the internal region of Arylsulfatase A.
<b>HOST SPECIES:</b>	Goat

### Properties

<b>PURIFICATION:</b>	Arylsulfatase A antibody was purified from goat serum by ammonium sulphate precipitation followed by antigen affinity chromatography using the immunizing peptide.
<b>PHYSICAL STATE:</b>	Liquid
<b>BUFFER:</b>	Arylsulfatase A antibody is supplied in Tris saline, 0.02% sodium azide, pH 7.3 with 0.5% bovine serum albumin.
<b>CONCENTRATION:</b>	500 ug/mL
<b>STORAGE CONDITIONS:</b>	Aliquot and store at -20°C. Minimize freezing and thawing.
<b>CLONALITY:</b>	Polyclonal
<b>CONJUGATE:</b>	Unconjugated

### Additional Info

<b>ALTERNATE NAMES:</b>	ARSA, arylsulfatase A, MLD, cerebroside-sulfatase, cerebroside 3-sulfatase
<b>ACCESSION NO.:</b>	NP_000478.2
<b>PROTEIN GI NO.:</b>	6005990
<b>OFFICIAL SYMBOL:</b>	ARSA

GENE ID: 410

---

### Background

**REFERENCES:** 1) Sevin C, Benraiss A, Van Dam D, Bonnin D, Nagels G, Verot L, Laurendeau I, Vidaud M, Gieselmann V, Vanier M, De Deyn PP, Aubourg P, Cartier N. Intracerebral adeno-associated virus-mediated gene transfer in rapidly progressive forms of metachromatic leukodystrophy. Hum Mol Genet. 2006 Jan 1;15(1):53-64. Epub 2005 Nov 25.

---

FOR RESEARCH USE ONLY

December 13, 2016