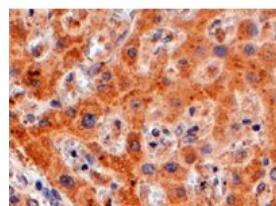




## WDFY1 Antibody

CATALOG NUMBER: 46-592



Immunohistochemistry staining of WDFY1 in paraffin embedded human liver using WDFY1 Antibody at 4 u. Steamed antigen retrieval with Tris/EDTA buffer pH 9, HRP-staining.

### Specifications

<b>SPECIES REACTIVITY:</b>	Human
<b>TESTED APPLICATIONS:</b>	ELISA
<b>APPLICATIONS:</b>	ELISA: Antibody detection limit dilution 1:32,000. Immunohistochemistry: In paraffin embedded human liver shows vesicular staining in the cytoplasm of hepatocytes. Recommended concentration, 4-6µg/ml
<b>SPECIFICITY:</b>	This antibody is expected to recognize both reported isoforms (as represented by NP_065881 and NP_848127)
<b>IMMUNOGEN:</b>	WDFY1 antibody was raised against a 13 amino acid synthetic peptide near the C-Terminus of WDFY1.
<b>HOST SPECIES:</b>	Goat

### Properties

<b>PURIFICATION:</b>	WDFY1 antibody was purified from goat serum by ammonium sulphate precipitation followed by antigen affinity chromatography using the immunizing peptide.
<b>PHYSICAL STATE:</b>	Liquid
<b>BUFFER:</b>	WDFY1 antibody is supplied in Tris saline, 0.02% sodium azide, pH 7.3 with 0.5% bovine serum albumin.
<b>CONCENTRATION:</b>	500 ug/mL
<b>STORAGE CONDITIONS:</b>	Aliquot and store at -20°C. Minimize freezing and thawing.
<b>CLONALITY:</b>	Polyclonal
<b>CONJUGATE:</b>	Unconjugated

### Additional Info

<b>ALTERNATE NAMES:</b>	WDFY1, WDF1, FENS-1, KIAA1435, WD repeat and FYVE domain containing 1, WD40 and FYVE domain containing 1, phosphoinositide-binding protein SR1, ZFYVE17
<b>ACCESSION NO.:</b>	NP_065881, NP_848127
<b>PROTEIN GI NO.:</b>	18482373
<b>OFFICIAL SYMBOL:</b>	WDFY1

GENE ID: 57590

---

## Background

**REFERENCES:** 1) Ridley SH, Ktistakis N, Davidson K, Anderson KE, Manifava M, Ellson CD, Lipp P, Bootman M, Coadwell J, Nazarian A, Erdjument-Bromage H, Tempst P, Cooper MA, Thuring JW, Lim ZY, Holmes AB, Stephens LR, Hawkins PT. FENS-1 and DFCP1 are FYVE domain-containing proteins with distinct functions in the endosomal and Golgi compartments. J Cell Sci. 2001 Nov;114(Pt 22):3991-4000.

---

FOR RESEARCH USE ONLY

December 13, 2016