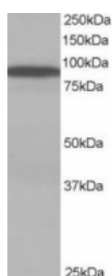


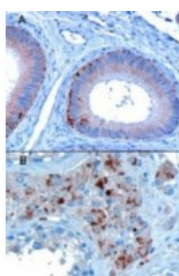


## VPS35 Antibody

CATALOG NUMBER: 46-584



Western blot analysis of VPS35 in human brain lysate (RIPA buffer, 35 ug total protein per lane) using VPS35 Antibody at 1 ug/mL.



VPS35 staining of paraffin embedded human testis showing A) Epithelial cells of the epididymis and B) Some Leydig cells. Microwaved antigen retrieval with A) Tris/EDTA buffer pH9 at 3 ug/mL or B) Citrate buffer pH 6 at 10 ug/mL.

### Specifications

<b>SPECIES REACTIVITY:</b>	Human
<b>TESTED APPLICATIONS:</b>	ELISA, IF, IHC, WB
<b>APPLICATIONS:</b>	ELISA: Antibody detection limit dilution 1:16000. Western Blot: Approximately 90 kDa band observed in human brain and testis lysates (predicted MW of 91 kDa according to NP_060676.2). Recommended for use at 1-3 ug/mL. Immunohistochemistry: In paraffin embedded human testis, shows positive staining in Leydig cells, and cytoplasmic staining (dot-like) of some epithelial cells of the epididymis and of the rete testis.
<b>POSITIVE CONTROL:</b>	1) Cat. No. 1303 - Human Brain Tissue Lysate 2) Cat. No. 1313 - Human Testis Tissue Lysate
<b>SPECIFICITY:</b>	note there is a hypothetical protein called similar to vacuolar protein sorting 35 (XP_040192.1), which is virtually identical.
<b>IMMUNOGEN:</b>	VPS35 antibody was raised against a 14 amino acid synthetic peptide near the C-Terminus of VPS35.
<b>HOST SPECIES:</b>	Goat

### Properties

<b>PURIFICATION:</b>	VPS35 antibody was purified from goat serum by ammonium sulphate precipitation followed by antigen affinity chromatography using the immunizing peptide.
<b>PHYSICAL STATE:</b>	Liquid
<b>BUFFER:</b>	VPS35 antibody is supplied in Tris saline, 0.02% sodium azide, pH 7.3 with 0.5% bovine serum albumin.
<b>CONCENTRATION:</b>	500 ug/mL
<b>STORAGE CONDITIONS:</b>	Aliquot and store at -20°C. Minimize freezing and thawing.
<b>CLONALITY:</b>	Polyclonal
<b>CONJUGATE:</b>	Unconjugated

### Additional Info

<b>ALTERNATE NAMES:</b>	VPS35, MEM3, FLJ10752, FLJ13588, FLJ20388, DKFZp434E1211, DKFZp434P1672, vacuolar protein sorting 35 (yeast), maternal-embryonic 3, TCCCTA00141
<b>ACCESSION NO.:</b>	NP_060676.2
<b>PROTEIN GI NO.:</b>	17999541
<b>OFFICIAL SYMBOL:</b>	VPS35
<b>GENE ID:</b>	55737

### Background

<b>REFERENCES:</b>	1) Zhang P, Yu L, Gao J, Fu Q, Dai F, Zhao Y, Zheng L, Zhao S. Cloning and characterization of human VPS35 and mouse Vps35 and mapping of VPS35 to human chromosome 16q13-q21. Genomics. 2000 Dec 1;70(2):253-7.
--------------------	------------------------------------------------------------------------------------------------------------------------------------------------------------------------------------------------------------------

FOR RESEARCH USE ONLY

December 13, 2016