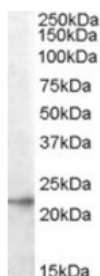




UBE2T Antibody

CATALOG NUMBER: 46-546



Western blot analysis of UBE2T in K562 lysate (35 ug protein in RIPA buffer) using UBE2T Antibody at 0.1 ug/mL.

Specifications

SPECIES REACTIVITY:	Human
TESTED APPLICATIONS:	ELISA, WB
APPLICATIONS:	ELISA: Antibody detection limit dilution 1:16000. Western Blot: Approximately 22 kDa band observed in lysates of cell lines K562, HEK293 and A549 (calculated MW of 22.5 kDa according to NP_054895.1). Recommended concentration: 0.1-0.3 ug/mL.
POSITIVE CONTROL:	1) Cat. No. 1204 - K562 Cell Lysate
IMMUNOGEN:	UBE2T antibody was raised against a 13 amino acid synthetic peptide near the C-Terminus of UBE2T.
HOST SPECIES:	Goat

Properties

PURIFICATION:	UBE2T antibody was purified from goat serum by ammonium sulphate precipitation followed by antigen affinity chromatography using the immunizing peptide.
PHYSICAL STATE:	Liquid
BUFFER:	UBE2T antibody is supplied in Tris saline, 0.02% sodium azide, pH 7.3 with 0.5% bovine serum albumin.
CONCENTRATION:	500 ug/mL
STORAGE CONDITIONS:	Aliquot and store at -20°C. Minimize freezing and thawing.
CLONALITY:	Polyclonal
CONJUGATE:	Unconjugated

Additional Info

ALTERNATE NAMES:	UBE2T, HSPC150, PIG50, HSPC150 protein similar to ubiquitin-conjugating enzyme, ubiquitin conjugating enzyme, ubiquitin-conjugating enzyme E2T (putative)
ACCESSION NO.:	NP_054895.1
PROTEIN GI NO.:	7661808
OFFICIAL SYMBOL:	UBE2T
GENE ID:	29089

Background

REFERENCES: 1) Machida YJ, Machida Y, Chen Y, Gurtan AM, Kupfer GM, D'Andrea AD, Dutta A. UBE2T is the E2 in the Fanconi anemia pathway and undergoes negative autoregulation. Mol Cell. 2006 Aug;23(4):589-96.

FOR RESEARCH USE ONLY

December 13, 2016