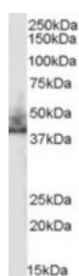


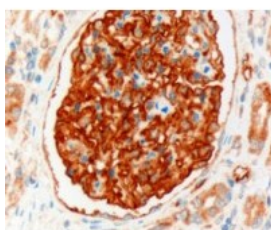


## SLC9A3R2 Antibody

CATALOG NUMBER: 46-379



Western blot analysis of SLC9A3R2 in human kidney lysate (35 ug protein in RIPA buffer) using SLC9A3R2 Antibody at 0.3 ug/mL.



Immunohistochemistry staining of SLC9A3R2 in human kidney using SLC9A3R2 Antibody at 3 ug/mL.

### Specifications

<b>SPECIES REACTIVITY:</b>	Human
<b>TESTED APPLICATIONS:</b>	ELISA, IHC, WB
<b>APPLICATIONS:</b>	ELISA: Antibody detection limit dilution 1:32,000. Western Blot: Approximately 38 kDa band observed in human kidney lysates (calculated MW of 37.4 kDa according to BAA33216.1). Recommended concentration: 0.3-1 ug/mL. Immunohistochemistry: In paraffin embedded human kidney shows strong membranous staining in glomerulus-. Recommended concentration, 1-2 ug/mL.
<b>POSITIVE CONTROL:</b>	1) Cat. No. 1305 - Human Kidney Tissue Lysate
<b>SPECIFICITY:</b>	Please note that this variant has an extra insertion of 11 residues compared to NP_004776.3. The immunizing peptide represents this insertion.
<b>IMMUNOGEN:</b>	SLC9A3R2 antibody was raised against an 11 amino acid synthetic peptide near the internal region of SLC9A3R2.
<b>HOST SPECIES:</b>	Goat

### Properties

<b>PURIFICATION:</b>	SLC9A3R2 antibody was purified from goat serum by ammonium sulphate precipitation followed by antigen affinity chromatography using the immunizing peptide.
<b>PHYSICAL STATE:</b>	Liquid
<b>BUFFER:</b>	SLC9A3R2 antibody is supplied in Tris saline, 0.02% sodium azide, pH 7.3 with 0.5% bovine serum albumin.
<b>CONCENTRATION:</b>	500 ug/mL
<b>STORAGE CONDITIONS:</b>	Aliquot and store at -20°C. Minimize freezing and thawing.
<b>CLONALITY:</b>	Polyclonal
<b>CONJUGATE:</b>	Unconjugated

### Additional Info

<b>ALTERNATE NAMES:</b>	SLC9A3R2, solute carrier family 9 (sodium/hydrogen exchanger), isoform 3 regulator 2, HGNC:11076, E3KARP, NHE3RF2, NHERF-2, NHERF2, OCTS2, SIP-1, SIP1, TKA-1, sodium/hydrogen exchanger, isoform 3 regulatory
-------------------------	--

factor 2, solute carrier family 9 isoform 3 regulator 2

**ACCESSION NO.:** BAA33216.1

**PROTEIN GI NO.:** 3618353

**OFFICIAL SYMBOL:** SLC9A3R2

**GENE ID:** 9351

### Background

**REFERENCES:** 1) Cha B, Kim JH, Hut H, Hogema BM, Nadarja J, Zizak M, Cavet M, Lee-Kwon W, Lohmann SM, Smolenski A, Tse CM, Yun C, de Jonge HR, Donowitz M. cGMP inhibition of Na<sup>+</sup>/H<sup>+</sup> antiporter 3 (NHE3) requires PDZ domain adapter NHERF2, a broad specificity protein kinase G-anchoring protein. J Biol Chem. 2005 Apr 29;280(17):16642-50. Epub 2005 Feb 18.

**FOR RESEARCH USE ONLY**

December 13, 2016