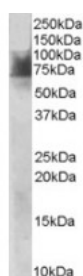




SLC6A4 Antibody

CATALOG NUMBER: 46-377



Western blot analysis of SLC6A4 in human duodenum lysate (RIPA buffer, 30 ug total protein per lane) using SLC6A4 Antibody at 1 ug/mL.

Specifications

SPECIES REACTIVITY:	Human
TESTED APPLICATIONS:	ELISA, WB
APPLICATIONS:	ELISA: Antibody detection limit dilution 1:32,000. Western Blot: Approximately 70-75 kDa bands observed in human duodenum lysates (calculated MW of 70.3 kDa according to NP_001036.1). Recommended concentration: 1-3 ug/mL.
POSITIVE CONTROL:	1) Cat. No. 1364 - Human Duodenum Tissue Lysate
IMMUNOGEN:	SLC6A4 antibody was raised against an 11 amino acid synthetic peptide near the internal region of SLC6A4.
HOST SPECIES:	Goat

Properties

PURIFICATION:	SLC6A4 antibody was purified from goat serum by ammonium sulphate precipitation followed by antigen affinity chromatography using the immunizing peptide.
PHYSICAL STATE:	Liquid
BUFFER:	SLC6A4 antibody is supplied in Tris saline, 0.02% sodium azide, pH 7.3 with 0.5% bovine serum albumin.
CONCENTRATION:	500 ug/mL
STORAGE CONDITIONS:	Aliquot and store at -20°C. Minimize freezing and thawing.
CLONALITY:	Polyclonal
CONJUGATE:	Unconjugated

Additional Info

ALTERNATE NAMES:	SLC6A4, solute carrier family 6 (neurotransmitter transporter, serotonin), member 4, HGNC:11050, 5-HTT, HTT, OCD1, SERT, hSERT, 5-hydroxytryptamine transporter, 5HT transporter, Na ⁺ /Cl ⁻ dependent serotonin transporter, serotonin transporter, sodium-dependent serotonin transporter, solute carrier family 6 member 4
ACCESSION NO.:	NP_001036.1
PROTEIN GI NO.:	4507043
OFFICIAL SYMBOL:	SLC6A4

GENE ID: 6532

Background

REFERENCES: 1) Voeller KK. Attention-deficit hyperactivity disorder (ADHD). J Child Neurol. 2004 Oct;19(10):798-814. Review.

FOR RESEARCH USE ONLY

December 13, 2016