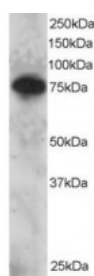




SETMAR Antibody

CATALOG NUMBER: 46-362



Western blot analysis of SETMAR in Daudi lysate (RIPA buffer, 30 ug total protein per lane) using SETMAR Antibody at 2 ug/mL.

Specifications

SPECIES REACTIVITY:	Human
TESTED APPLICATIONS:	ELISA, WB
APPLICATIONS:	ELISA: Antibody detection limit dilution 1:16000. Western Blot: Approximately 70-75 kDa band seen in Daudi lysate. Recommended for use at 1-3 ug/mL.
POSITIVE CONTROL:	1) Cat. No. 1224 - Daudi Cell Lysate
IMMUNOGEN:	SETMAR antibody was raised against a 14 amino acid synthetic peptide near the C-Terminus of SETMAR.
HOST SPECIES:	Goat

Properties

PURIFICATION:	SETMAR antibody was purified from goat serum by ammonium sulphate precipitation followed by antigen affinity chromatography using the immunizing peptide.
PHYSICAL STATE:	Liquid
BUFFER:	SETMAR antibody is supplied in Tris saline, 0.02% sodium azide, pH 7.3 with 0.5% bovine serum albumin.
CONCENTRATION:	500 ug/mL
STORAGE CONDITIONS:	Aliquot and store at -20°C. Minimize freezing and thawing.
CLONALITY:	Polyclonal
CONJUGATE:	Unconjugated

Additional Info

ALTERNATE NAMES:	SETMAR, SET domain and mariner transposase fusion gene, Mar1, HsMar1, METNASE
ACCESSION NO.:	NP_006506
PROTEIN GI NO.:	194306650
OFFICIAL SYMBOL:	SETMAR
GENE ID:	6419

Background

REFERENCES:

1) Robertson HM, Zumpano KL. Molecular evolution of an ancient mariner transposon, Hsmar1, in the human genome. *Gene*. 1997 Dec 31;205(1-2):203-17.

FOR RESEARCH USE ONLY

December 13, 2016