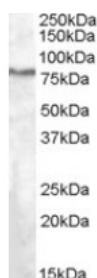




## SEL1L Antibody

CATALOG NUMBER: 46-346



Western blot analysis of SEL1L in HepG2 lysate (35 ug protein in RIPA buffer) using SEL1L Antibody at 1 ug/mL.

### Specifications

<b>SPECIES REACTIVITY:</b>	Human
<b>TESTED APPLICATIONS:</b>	ELISA, WB
<b>APPLICATIONS:</b>	ELISA: Antibody detection limit dilution 1:4,000. Western Blot: Approximately 80 kDa band observed in HEPG2 lysate (calculated MW of 88.8 kDa according to NP_005056.3). Recommended concentration: 1-3 ug/mL.
<b>POSITIVE CONTROL:</b>	1) Cat. No. 1211 - HepG2 Cell Lysate
<b>IMMUNOGEN:</b>	SEL1L antibody was raised against a 12 amino acid synthetic peptide near the internal region of SEL1L.
<b>HOST SPECIES:</b>	Goat

### Properties

<b>PURIFICATION:</b>	SEL1L antibody was purified from goat serum by ammonium sulphate precipitation followed by antigen affinity chromatography using the immunizing peptide.
<b>PHYSICAL STATE:</b>	Liquid
<b>BUFFER:</b>	SEL1L antibody is supplied in Tris saline, 0.02% sodium azide, pH 7.3 with 0.5% bovine serum albumin.
<b>CONCENTRATION:</b>	500 ug/mL
<b>STORAGE CONDITIONS:</b>	Aliquot and store at -20°C. Minimize freezing and thawing.
<b>CLONALITY:</b>	Polyclonal
<b>CONJUGATE:</b>	Unconjugated

### Additional Info

<b>ALTERNATE NAMES:</b>	SEL1L, sel-1 suppressor of lin-12-like (C. elegans), IBD2, PRO1063, SEL1-LIKE, Suppressor of lin 12 (sel-1), C. elegans, homolog of, sel-1 (suppressor of lin-12, C.elegans)-like, sel-1 suppressor of lin-12-like, TSA305, UNQ128/PRO1063
<b>ACCESSION NO.:</b>	NP_005056.3
<b>PROTEIN GI NO.:</b>	19923669
<b>OFFICIAL SYMBOL:</b>	SEL1L
<b>GENE ID:</b>	6400

