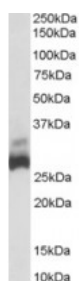




SDHB Antibody

CATALOG NUMBER: 46-345



Western blot analysis of SDHB in human liver lysate (35 ug protein in RIPA buffer) using SDHB Antibody at 0.03 ug/mL.

Specifications

SPECIES REACTIVITY:	Human
TESTED APPLICATIONS:	ELISA, WB
APPLICATIONS:	ELISA: Antibody detection limit dilution 1:8,000. Western Blot: Approximately 28 kDa band observed in human liver lysates (calculated MW of 31.6 kDa according to NP_002991.1). Recommended concentration: 0.03-0.1 ug/mL.
POSITIVE CONTROL:	1) Cat. No. 1304 - Human Liver Tissue Lysate
IMMUNOGEN:	SDHB antibody was raised against a 10 amino acid synthetic peptide near the C-Terminus of SDHB.
HOST SPECIES:	Goat

Properties

PURIFICATION:	SDHB antibody was purified from goat serum by ammonium sulphate precipitation followed by antigen affinity chromatography using the immunizing peptide.
PHYSICAL STATE:	Liquid
BUFFER:	SDHB antibody is supplied in Tris saline, 0.02% sodium azide, pH 7.3 with 0.5% bovine serum albumin.
CONCENTRATION:	500 ug/mL
STORAGE CONDITIONS:	Aliquot and store at -20°C. Minimize freezing and thawing.
CLONALITY:	Polyclonal
CONJUGATE:	Unconjugated

Additional Info

ALTERNATE NAMES:	SDHB, IP, SDH, SDH1, SDHIP, succinate dehydrogenase complex, subunit B, iron sulfur (Ip), OTTHUMP00000044624, iron-sulfur subunit
ACCESSION NO.:	NP_002991.1
PROTEIN GI NO.:	9257242
OFFICIAL SYMBOL:	SDHB
GENE ID:	6390

Background

REFERENCES: 1) Selak MA, Armour SM, MacKenzie ED, Boulahbel H, Watson DG, Mansfield KD, Pan Y, Simon MC, Thompson CB, Gottlieb E. Succinate links TCA cycle dysfunction to oncogenesis by inhibiting HIF-alpha prolyl hydroxylase. Cancer Cell. 2005 Jan;7(1):77-85.

FOR RESEARCH USE ONLY

December 13, 2016