

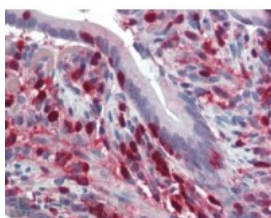


S100A4 Antibody

CATALOG NUMBER: 46-326



Western Blot (0.03ug/ml) staining of Human Placenta lysate (35ug protein in RIPA buffer). Primary incubation was 1 hour. Detected by chemiluminescence.



Immunohistochemistry (2ug/ml) staining of paraffin embedded Human Small Intestine. Steamed antigen retrieval with citrate buffer pH 6, AP-staining.

Specifications

SPECIES REACTIVITY:	Human
TESTED APPLICATIONS:	ELISA, IHC-P, WB
APPLICATIONS:	ELISA: antibody detection limit dilution 1:128000. Western Blot: Approx 13kDa band observed in Human Placenta lysates (calculated MW of 11.7kDa according to NP_002952.1 and NP_062427.1). Recommended concentration: 0.03-0.1ug/ml. Immunohistochemistry: In paraffin embedded Human Small Intestine shows strong nuclear staining in some cells and weaker cytoplasm staining in some other cells. Recommended concentration, 2-3ug/ml.
POSITIVE CONTROL:	1) Cat. No. 1309 - Human Placenta Lysate
SPECIFICITY:	Both variants (NP_002952.1; NP_062427.1) represent identical protein.
IMMUNOGEN:	S100A4 antibody was raised against a 13 amino acid synthetic peptide near the C-Terminus of S100A4.
HOST SPECIES:	Goat

Properties

PURIFICATION:	S100A4 antibody was purified from goat serum by ammonium sulphate precipitation followed by antigen affinity chromatography using the immunizing peptide.
PHYSICAL STATE:	Liquid
BUFFER:	S100A4 antibody is supplied in Tris saline, 0.02% sodium azide, pH 7.3 with 0.5% bovine serum albumin.
CONCENTRATION:	500 ug/mL
STORAGE CONDITIONS:	Aliquot and store at -20°C. Minimize freezing and thawing.
CLONALITY:	Polyclonal
CONJUGATE:	Unconjugated

Additional Info

ALTERNATE NAMES:	S100A4, S100 calcium binding protein A4, 18A2, 42A, CAPL, MTS1, P9KA, PEL98, S100 calcium binding protein A4 (calcium protein, calvasculin, metastasin, murine placental homolog), S100 calcium-binding protein A4, S100 calcium-binding protein A4 (calcium protein, malignant transformation suppression 1
-------------------------	--

ACCESSION NO.: NP_002952.1, NP_062427.1

PROTEIN GI NO.: 4506765

OFFICIAL SYMBOL: S100A4

GENE ID: 6275

Background

REFERENCES: 1) Li ZH, Bresnick AR. The S100A4 metastasis factor regulates cellular motility via a direct interaction with myosin-IIA. Cancer Res. 2006 May 15;66(10):5173-80.

FOR RESEARCH USE ONLY

December 13, 2016