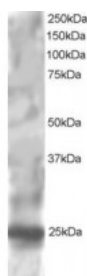




RGS1 Antibody

CATALOG NUMBER: 46-287



Western blot analysis of RGS1 in HepG2 lysate (RIPA buffer, 30 ug total protein per lane) using RGS1 Antibody at 1 ug/mL.

Specifications

SPECIES REACTIVITY:	Human
TESTED APPLICATIONS:	ELISA, WB
APPLICATIONS:	ELISA: Antibody detection limit dilution 1:32000. Western Blot: Approximately 25 kDa band seen in HepG2 lysate. Recommended for use at 0.5-2 ug/mL.
POSITIVE CONTROL:	1) Cat. No. 1211 - HepG2 Cell Lysate
IMMUNOGEN:	RGS1 antibody was raised against a 12 amino acid synthetic peptide near the C-Terminus of RGS1.
HOST SPECIES:	Goat

Properties

PURIFICATION:	RGS1 antibody was purified from goat serum by ammonium sulphate precipitation followed by antigen affinity chromatography using the immunizing peptide.
PHYSICAL STATE:	Liquid
BUFFER:	RGS1 antibody is supplied in Tris saline, 0.02% sodium azide, pH 7.3 with 0.5% bovine serum albumin.
CONCENTRATION:	500 ug/mL
STORAGE CONDITIONS:	Aliquot and store at -20°C. Minimize freezing and thawing.
CLONALITY:	Polyclonal
CONJUGATE:	Unconjugated

Additional Info

ALTERNATE NAMES:	RGS1, regulator of G-protein signalling 1, 1R20, BL34, IER1, IR20, Regulator of G-protein signaling 1
ACCESSION NO.:	NP_002913
PROTEIN GI NO.:	115387108
OFFICIAL SYMBOL:	RGS1
GENE ID:	5996

Background

REFERENCES:

1) Newton JS, Deed RW, Mitchell EL, Murphy JJ, Norton JD. A B cell specific immediate early human gene is located on chromosome band 1q31 and encodes an alpha helical basic phosphoprotein. *Biochim Biophys Acta*. 1993 Nov 16;1216(2):314-6.

FOR RESEARCH USE ONLY

December 13, 2016