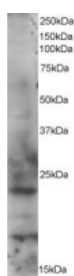




RAB2 Antibody

CATALOG NUMBER: 46-258



Western blot analysis of RAB2 in HeLa lysate (RIPA buffer, 35 ug total protein per lane) using RAB2 Antibody at 1 ug/mL.

Specifications

SPECIES REACTIVITY:	Human
TESTED APPLICATIONS:	ELISA, WB
APPLICATIONS:	Western Blot: Approximately 23 kDa and 18 kDa bands seen in HeLa cell lysates. Recommended for use at 1-3 ug/mL.
POSITIVE CONTROL:	1) Cat. No. 1201 - HeLa Cell Lysate
IMMUNOGEN:	RAB2 antibody was raised against a 15 amino acid synthetic peptide near the C-Terminus of RAB2.
HOST SPECIES:	Goat

Properties

PURIFICATION:	RAB2 antibody was purified from goat serum by ammonium sulphate precipitation followed by antigen affinity chromatography using the immunizing peptide.
PHYSICAL STATE:	Liquid
BUFFER:	RAB2 antibody is supplied in Tris saline, 0.02% sodium azide, pH 7.3 with 0.5% bovine serum albumin.
CONCENTRATION:	500 ug/mL
STORAGE CONDITIONS:	Aliquot and store at -20°C. Minimize freezing and thawing.
CLONALITY:	Polyclonal
CONJUGATE:	Unconjugated

Additional Info

ALTERNATE NAMES:	RAB2, RAB2A, RAB2, member RAS oncogene family
ACCESSION NO.:	NP_002856
PROTEIN GI NO.:	4506365
OFFICIAL SYMBOL:	RAB2A
GENE ID:	5862

Background

REFERENCES:

1) Tisdale EJ, Balch WE. Rab2 is essential for the maturation of pre-Golgi intermediates. J Biol Chem 1996 Nov 15;271(46):29372-9

FOR RESEARCH USE ONLY

December 13, 2016