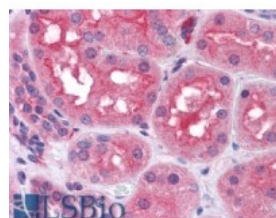




Prolyl Endopeptidase Antibody

CATALOG NUMBER: 46-228



Immunohistochemistry (3.8ug/ml) staining
of paraffin embedded Human Kidney.
Steamed antigen retrieval with citrate
buffer pH 6, AP-staining.

Specifications

SPECIES REACTIVITY:	Human
TESTED APPLICATIONS:	ELISA, IHC-P
APPLICATIONS:	ELISA: antibody detection limit dilution 1:16000. Western Blot: Preliminary experiments gave an approx 45kDa band in Human Brain, Lymph Node, Spleen and Testis lysates after 0.3ug/ml antibody staining. Please note that currently we cannot find an explanation in the literature for the band we observe giv Immunohistochemistry: In paraffin embedded Human Kidney shows distinct staining patterns in the cytoplasm of PCT. Recommended concentration, 3-6ug/ml.
IMMUNOGEN:	Prolyl Endopeptidase antibody was raised against a 13 amino acid synthetic peptide near the internal region of Prolyl Endopeptidase.
HOST SPECIES:	Goat

Properties

PURIFICATION:	Prolyl Endopeptidase antibody was purified from goat serum by ammonium sulphate precipitation followed by antigen affinity chromatography using the immunizing peptide.
PHYSICAL STATE:	Liquid
BUFFER:	Prolyl Endopeptidase antibody is supplied in Tris saline, 0.02% sodium azide, pH 7.3 with 0.5% bovine serum albumin.
CONCENTRATION:	500 ug/mL
STORAGE CONDITIONS:	Aliquot and store at -20°C. Minimize freezing and thawing.
CLONALITY:	Polyclonal
CONJUGATE:	Unconjugated

Additional Info

ALTERNATE NAMES:	PREP, prolyl endopeptidase, HGNC:9358, MGC16060, PE, PEP, OTTHUMP00000040498, dJ355L5.1 (prolyl endopeptidase), post-proline cleaving enzyme
ACCESSION NO.:	NP_002717.3

PROTEIN GI NO.: 41349456

OFFICIAL SYMBOL: PREP

GENE ID: 5550

Background

REFERENCES: 1) Momeni N, Nordstrom BM, Horstmann V, Avarsaji H, Sivberg BV. Alterations of prolyl endopeptidase activity in the plasma of children with autistic spectrum disorders. BMC Psychiatry. 2005 Jun 2;5(1):27

FOR RESEARCH USE ONLY

December 13, 2016