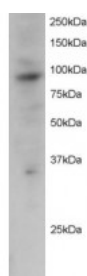




## PRAM1 Antibody

CATALOG NUMBER: 46-214



Western Blot staining (2ug/ml) of Jurkat lysate (RIPA buffer, 30ug total protein per lane). Primary incubated for 12 hour. Detected by western blot using chemiluminescence.

### Specifications

<b>SPECIES REACTIVITY:</b>	Human
<b>TESTED APPLICATIONS:</b>	ELISA, WB
<b>APPLICATIONS:</b>	#N/A
<b>POSITIVE CONTROL:</b>	1) Cat. No. 1205 - Jurkat Cell Lysate
<b>IMMUNOGEN:</b>	PRAM1 antibody was raised against a 15 amino acid synthetic peptide near the C-Terminus of PRAM1.
<b>HOST SPECIES:</b>	Goat

### Properties

<b>PURIFICATION:</b>	PRAM1 antibody was purified from goat serum by ammonium sulphate precipitation followed by antigen affinity chromatography using the immunizing peptide.
<b>PHYSICAL STATE:</b>	Liquid
<b>BUFFER:</b>	PRAM1 antibody is supplied in Tris saline, 0.02% sodium azide, pH 7.3 with 0.5% bovine serum albumin.
<b>CONCENTRATION:</b>	500 ug/mL
<b>STORAGE CONDITIONS:</b>	Aliquot and store at -20°C. Minimize freezing and thawing.
<b>CLONALITY:</b>	Polyclonal
<b>CONJUGATE:</b>	Unconjugated

### Additional Info

<b>ALTERNATE NAMES:</b>	PRAM-1, PRAM-1 protein, PML-RARA target gene encoding an Adaptor Molecule-1, PRAM-1, PML-RAR
<b>ACCESSION NO.:</b>	NP_115528
<b>PROTEIN GI NO.:</b>	302318952
<b>OFFICIAL SYMBOL:</b>	PRAM1
<b>GENE ID:</b>	84106

## Background

**REFERENCES:** 1) Moog-Lutz C, Peterson EJ, Lutz PG, Eliason S, Cave-Riant F, Singer A, Di Gioia Y, Dmowski S, Kamens J, Cayre YE, Koretzky G. PRAM-1 is a novel adaptor protein regulated by retinoic acid (RA) and promyelocytic leukemia (PML)-RA receptor alpha in acute promyelocytic leukemia cells. J Biol Chem 2001 Jun 22;276(25):22375-81

---

**FOR RESEARCH USE ONLY**

December 13, 2016