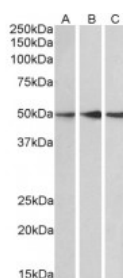




PPP2R5E Antibody

CATALOG NUMBER: 46-212



Western Blot (0.1ug/ml) staining of Human Cerebellum (A), Mouse (B) and Rat (C) Brain lysate (35ug protein in RIPA buffer). Primary incubation was 1 hour. Detected by chemiluminescence.

Specifications

SPECIES REACTIVITY:	Human, Mouse, Rat
TESTED APPLICATIONS:	ELISA, WB
APPLICATIONS:	ELISA: antibody detection limit dilution 1:16000. Western Blot: Approx 50kDa band observed in Human (Cerebellum), Mouse and Rat Brain lysates (calculated MW of 54.7kDa according to Human NP_001269108.1 and Mouse NP_036154.1 and 50.4kDa according to Rat NP_001100210.1). Recommended concentration: 0.1-0.3
POSITIVE CONTROL:	1) Cat. No. 1403 - Mouse Brain Tissue Lysate
IMMUNOGEN:	PPP2R5E antibody was raised against a 13 amino acid synthetic peptide near the C-Terminus of PPP2R5E.
HOST SPECIES:	Goat

Properties

PURIFICATION:	PPP2R5E antibody was purified from goat serum by ammonium sulphate precipitation followed by antigen affinity chromatography using the immunizing peptide.
PHYSICAL STATE:	Liquid
BUFFER:	PPP2R5E antibody is supplied in Tris saline, 0.02% sodium azide, pH 7.3 with 0.5% bovine serum albumin.
CONCENTRATION:	500 ug/mL
STORAGE CONDITIONS:	Aliquot and store at -20°C. Minimize freezing and thawing.
CLONALITY:	Polyclonal
CONJUGATE:	Unconjugated

Additional Info

ALTERNATE NAMES:	PPP2R5E, protein phosphatase 2, regulatory subunit B (B56), epsilon isoform, PP2A, B subunit, B' epsilon isoform, R5 epsilon isoform, B56 epsilon isoform, PR61 epsilon isoform, Serine/threonine protein phosphatase 2A, 56 kDa regulatory subunit,
ACCESSION NO.:	NP_006237.1

PROTEIN GI NO.: 5453956

OFFICIAL SYMBOL: PPP2R5E

GENE ID: 5529

Background

REFERENCES: 1) McCright B, Virshup DM. Identification of a new family of protein phosphatase 2A regulatory subunits. J Biol Chem 1995 Nov 3;270(44):26123-8

FOR RESEARCH USE ONLY

December 13, 2016