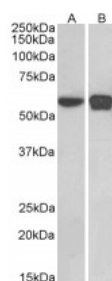




PLRG1 Antibody

CATALOG NUMBER: 46-203



Western Blot (0.1ug/ml) staining of
HEK293 (A) and NIH3T3 (B) nuclear cell
lysates (35ug protein in RIPA buffer).
Primary incubation was 1 hour. Detected
by chemiluminescence.

Specifications

SPECIES REACTIVITY:	Mouse
TESTED APPLICATIONS:	ELISA, WB
APPLICATIONS:	ELISA: antibody detection limit dilution 1:16000. Western Blot: Approx 60kDa band seen in Mouse Kidney extracts. Recommended for use at 0.5-2ug/ml.
POSITIVE CONTROL:	1) Cat. No. 1405 - Mouse Kidney Tissue Lysate
SPECIFICITY:	This antibody is expected to recognise isoform 1 (NP_002660.1) and isoform 2 (NP_001188493.1).
IMMUNOGEN:	PLRG1 antibody was raised against a 14 amino acid synthetic peptide near the C-Terminus of PLRG1.
HOST SPECIES:	Goat

Properties

PURIFICATION:	PLRG1 antibody was purified from goat serum by ammonium sulphate precipitation followed by antigen affinity chromatography using the immunizing peptide.
PHYSICAL STATE:	Liquid
BUFFER:	PLRG1 antibody is supplied in Tris saline, 0.02% sodium azide, pH 7.3 with 0.5% bovine serum albumin.
CONCENTRATION:	500 ug/mL
STORAGE CONDITIONS:	Aliquot and store at -20°C. Minimize freezing and thawing.
CLONALITY:	Polyclonal
CONJUGATE:	Unconjugated

Additional Info

ALTERNATE NAMES:	PLRG1, pleiotropic regulator 1 (PRL1 homolog, Arabidopsis), PRL1, MGC110980, pleiotropic regulator 1 (PRL1, Arabidopsis homolog), pleiotropic regulator 1 (PRL1homolog, Cwc1, PRP46, PRPF46, TANGO4
ACCESSION NO.:	NP_002660.1
PROTEIN GI NO.:	4505895

OFFICIAL SYMBOL: PLRG1

GENE ID: 5356

Background

REFERENCES: 1) Ajuh P, Lamond AI Identification of peptide inhibitors of pre-mRNA splicing derived from the essential interaction domains of CDC5L and PLRG1 Nucleic Acids Res. 2003 Nov 1;31(21):6104-16

FOR RESEARCH USE ONLY

December 13, 2016