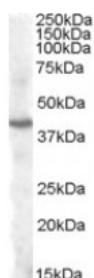




PITX3 Antibody

CATALOG NUMBER: 46-197



Western Blot (1ug/ml) staining of Human Cerebellum lysate (35ug protein in RIPA buffer). Primary incubation was 1 hour. Detected by chemiluminescence.

Specifications

SPECIES REACTIVITY:	Human
TESTED APPLICATIONS:	ELISA, WB
APPLICATIONS:	ELISA: antibody detection limit dilution 1:1000. Western Blot: Approx 40kDa band observed in Human Brain (Cerebellum and Cerebral Cortex) lysates (calculated MW of 31.8kDa according to NP_005020.1). The observed molecular weight corresponds to earlier findings in literature with different antibodies (C
POSITIVE CONTROL:	1) Cat. No. 1362 - Human Cerebellum, Left Lysate Cat. No. 1363 - Human Cerebellum, Right Lysate
SPECIFICITY:	This antibody is not expected to cross-react with PITX1 and PITX2.
IMMUNOGEN:	PITX3 antibody was raised against a 12 amino acid synthetic peptide near the internal region of PITX3.
HOST SPECIES:	Goat

Properties

PURIFICATION:	PITX3 antibody was purified from goat serum by ammonium sulphate precipitation followed by antigen affinity chromatography using the immunizing peptide.
PHYSICAL STATE:	Liquid
BUFFER:	PITX3 antibody is supplied in Tris saline, 0.02% sodium azide, pH 7.3 with 0.5% bovine serum albumin.
CONCENTRATION:	500 ug/mL
STORAGE CONDITIONS:	Aliquot and store at -20°C. Minimize freezing and thawing.
CLONALITY:	Polyclonal
CONJUGATE:	Unconjugated

Additional Info

ALTERNATE NAMES:	PITX3, paired-like homeodomain 3, MGC12766, PTX3, homeobox protein PITX3
ACCESSION NO.:	NP_005020.1
PROTEIN GI NO.:	4826912

OFFICIAL SYMBOL: PITX3

GENE ID: 5309

Background

REFERENCES: 1) Kim J, Inoue K, Ishii J, Vanti WB, Voronov SV, Murchison E, Hannon G, Abelson A. A MicroRNA feedback circuit in midbrain dopamine neurons. Science. 2007 Aug 31;317(5842):1220-4.

FOR RESEARCH USE ONLY

December 13, 2016