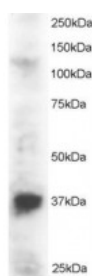




## PINX1 Antibody

CATALOG NUMBER: 46-191



Western Blot staining (2ug/ml) of Jurkat lysate (RIPA buffer, 30ug total protein per lane). Primary incubated for 1 hour. Detected by western blot using chemiluminescence.

### Specifications

<b>SPECIES REACTIVITY:</b>	Human
<b>TESTED APPLICATIONS:</b>	ELISA, WB
<b>APPLICATIONS:</b>	ELISA: antibody detection limit dilution 1:4000. Western Blot: Approx 35kDa band seen in Jurkat lysate. Recommended for use at 1-3ug/ml.
<b>POSITIVE CONTROL:</b>	1) Cat. No. 1205 - Jurkat Cell Lysate
<b>IMMUNOGEN:</b>	PINX1 antibody was raised against a 14 amino acid synthetic peptide near the N-Terminus of PINX1.
<b>HOST SPECIES:</b>	Goat

### Properties

<b>PURIFICATION:</b>	PINX1 antibody was purified from goat serum by ammonium sulphate precipitation followed by antigen affinity chromatography using the immunizing peptide.
<b>PHYSICAL STATE:</b>	Liquid
<b>BUFFER:</b>	PINX1 antibody is supplied in Tris saline, 0.02% sodium azide, pH 7.3 with 0.5% bovine serum albumin.
<b>CONCENTRATION:</b>	500 ug/mL
<b>STORAGE CONDITIONS:</b>	Aliquot and store at -20°C. Minimize freezing and thawing.
<b>CLONALITY:</b>	Polyclonal
<b>CONJUGATE:</b>	Unconjugated

### Additional Info

<b>ALTERNATE NAMES:</b>	PINX1, PIN2-interacting protein 1, LPTS, MGC8850, FLJ20565, LPTL, 67-11-3 protein, hepatocellular carcinoma-related putative tumor suppressor
<b>ACCESSION NO.:</b>	NP_060354.4
<b>PROTEIN GI NO.:</b>	148747556
<b>OFFICIAL SYMBOL:</b>	PINX1

**GENE ID:** 54984

---

### Background

**REFERENCES:** 1) Zhou XZ, Lu KP. Pin2/TRF1-interacting protein PinX1 is a potent telomerase inhibitor. Cell 2001 Nov 2;107(3):347-59

---

**FOR RESEARCH USE ONLY**

December 13, 2016