

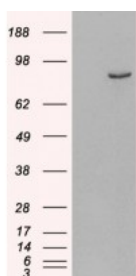


Phosphodiesterase 4B Antibody

CATALOG NUMBER: 46-181



Western Blot (0.5ug/ml) staining of Mouse Brain Lysate (35ug protein in RIPA buffer). Primary incubation was 1 hour. Detected by chemiluminescence.



HEK293 overexpressing Human PDE4B and probed with antibody (mock transfection in first lane).

Specifications

SPECIES REACTIVITY:	Mouse
TESTED APPLICATIONS:	ELISA, WB
APPLICATIONS:	ELISA: antibody detection limit dilution 1:8000. Western Blot: Approx 85kDa band observed in Mouse Brain lysates (calculated MW of 83.3kDa according to Human NP_002591.2 and 82.1kDa according to Mouse NP_062814.2). In transfected HEK293 transiently expressing Human PDE4B a band of approx. 85kDa is observed.
POSITIVE CONTROL:	1) Cat. No. 1403 - Mouse Brain Tissue Lysate
SPECIFICITY:	This antibody is expected to recognise all reported isoforms (NP_002591.2, NP_001032418.1, NP_001032416.1 and NP_001032417.1).
IMMUNOGEN:	Phosphodiesterase 4B antibody was raised against a 14 amino acid synthetic peptide near the C-Terminus of Phosphodiesterase 4B.
HOST SPECIES:	Goat

Properties

PURIFICATION:	Phosphodiesterase 4B antibody was purified from goat serum by ammonium sulphate precipitation followed by antigen affinity chromatography using the immunizing peptide.
PHYSICAL STATE:	Liquid
BUFFER:	pH 7.3 phosphate buffered saline, 0.02% sodium azide, pH 7.3 with 0.5% bovine serum albumin.
CONCENTRATION:	500 ug/mL
STORAGE CONDITIONS:	Aliquot and store at -20°C. Minimize freezing and thawing.
CLONALITY:	Polyclonal
CONJUGATE:	Unconjugated

Additional Info

ALTERNATE NAMES:	PDE4B, phosphodiesterase 4B, cAMP-specific (phosphodiesterase E4 dunce homolog, Drosophila), RP5-876C12.1, DKFZp686F2182, DPDE4, MGC126529, PDEIVB, OTTHUMP00000046896, cAMP-specific 3', 5'-
-------------------------	---

cyclic phosphodiesterase 4B, dunce-like phosphodiesterase E4, cAMP-specific, cAMP-specific (dunce (Drosophila)-homolog phosphodiesterase E4)

ACCESSION NO.:	NP_002591.2, NP_001032418.1, NP_001032416.1, NP_001032417.1
PROTEIN GI NO.:	32171241
OFFICIAL SYMBOL:	PDE4B
GENE ID:	5142

Background

REFERENCES: 1) Millar JK, Pickard BS, Mackie S, James R, Christie S, Buchanan SR, Malloy MP, Chubb JE, Huston E, Baillie GS, Thomson PA, Hill EV, Brandon NJ, Rain JC, Camargo LM, Whiting PJ, Houslay MD, Blackwood DH, Muir WJ, Porteous DJ. DISC1 and PDE4B are interacting genetic factors in schizophrenia that regulate cAMP signaling. Science. 2005 Nov 18;310(5751):1187-91.

FOR RESEARCH USE ONLY

December 13, 2016