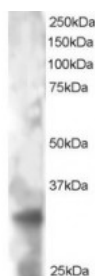




## PHEMX Antibody

CATALOG NUMBER: 46-176



Western Blot staining (2ug/ml) of HeLa lysate (RIPA buffer, 30ug total protein per lane). Primary incubated for 12 hour. Detected by western blot using chemiluminescence.

### Specifications

<b>SPECIES REACTIVITY:</b>	Human
<b>TESTED APPLICATIONS:</b>	ELISA, WB
<b>APPLICATIONS:</b>	ELISA: antibody detection limit dilution 1:2000. Western Blot: Approx 33-35kDa band seen in HeLa lysate. Recommended for use at 1-3ug/ml.
<b>POSITIVE CONTROL:</b>	1) Cat. No. 1201 - HeLa Cell Lysate
<b>IMMUNOGEN:</b>	PHEMX antibody was raised against a 13 amino acid synthetic peptide near the C-Terminus of PHEMX.
<b>HOST SPECIES:</b>	Goat

### Properties

<b>PURIFICATION:</b>	PHEMX antibody was purified from goat serum by ammonium sulphate precipitation followed by antigen affinity chromatography using the immunizing peptide.
<b>PHYSICAL STATE:</b>	Liquid
<b>BUFFER:</b>	pH EMX antibody is supplied in Tris saline, 0.02% sodium azide, pH 7.3 with 0.5% bovine serum albumin.
<b>CONCENTRATION:</b>	500 ug/mL
<b>STORAGE CONDITIONS:</b>	Aliquot and store at -20°C. Minimize freezing and thawing.
<b>CLONALITY:</b>	Polyclonal
<b>CONJUGATE:</b>	Unconjugated

### Additional Info

<b>ALTERNATE NAMES:</b>	TSPAN32, tetraspanin 32, MGC22455, PHEMX, PHMX, TSSC6, pan-hematopoietic expression, pan-hematopoietic expression protein, tetraspanin, tumor-suppressing STF cDNA 6, tumor-suppressing subchromosomal transferable fragment cDNA 6, tumor-suppressing subtransferable candidate 6
<b>ACCESSION NO.:</b>	NP_620591.1, NP_005696.1
<b>PROTEIN GI NO.:</b>	21070986
<b>OFFICIAL SYMBOL:</b>	TSPAN32

---

**GENE ID:** 10077

---

**Background**

**REFERENCES:** 1) Lee MP, Brandenburg S, Landes GM, Adams M, Miller G, Feinberg AP. Two novel genes in the center of the 11p15 imprinted domain escape genomic imprinting. Hum Mol Genet. 1999 Apr;8(4):683-90.

---

**FOR RESEARCH USE ONLY**

December 13, 2016