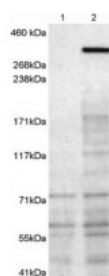


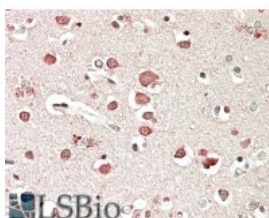


Neurobeachin Antibody

CATALOG NUMBER: 45-951



Western Blot (1ug/ml) staining of 1) untransfected HEK293T cells 2) HEK293T cells transfected with mouse NBEA. Detected by chemiluminescence. Data kindly provided by Professor John Creemers, K.U. Leuven, Belgium



Immunohistochemistry (5ug/ml) staining of paraffin embedded Human Cerebral Cortex. Steamed antigen retrieval with citrate buffer pH 6, AP-staining.

Specifications

SPECIES REACTIVITY:	Human, Mouse
TESTED APPLICATIONS:	ELISA, IHC-P, WB
APPLICATIONS:	ELISA: antibody detection limit dilution 1:4000. Western Blot: Approx 300kDa band observed in lysates of transfected HEK293 and endogenously in lysates of insulinoma cell line B-TC3 (calculated MW of 327kDa according to NP_056493.3). Data from a previous goat. Data kindly provided by Professor John C. Immunohistochemistry: In paraffin embedded Human Cerebral Cortex shows textured cytoplasm staining in the neuronal cell bodies. Recommended concentration, 5-10ug/ml.
SPECIFICITY:	This antibody is expected to recognise isoform 1 (NP_056493.3) and isoform 2 (NP_001191126.1).
IMMUNOGEN:	Neurobeachin antibody was raised against a 13 amino acid synthetic peptide near the C-Terminus of Neurobeachin.
HOST SPECIES:	Goat

Properties

PURIFICATION:	Neurobeachin antibody was purified from goat serum by ammonium sulphate precipitation followed by antigen affinity chromatography using the immunizing peptide.
PHYSICAL STATE:	Liquid
BUFFER:	Neurobeachin antibody is supplied in Tris saline, 0.02% sodium azide, pH 7.3 with 0.5% bovine serum albumin.
CONCENTRATION:	500 ug/mL
STORAGE CONDITIONS:	Aliquot and store at -20°C. Minimize freezing and thawing.
CLONALITY:	Polyclonal
CONJUGATE:	Unconjugated

Additional Info

ALTERNATE NAMES:	NBEA, BCL8B, FLJ10197, KIAA1544, neurobeachin, RP11-270C18.1, LYST2, lysosomal trafficking regulator
-------------------------	--

ACCESSION NO.: NP_056493.3

PROTEIN GI NO.: 62422577

OFFICIAL SYMBOL: NBEA

GENE ID: 26960

Background

REFERENCES: 1) Wang X, Herberg FW, Laue MM, Wullner C, Hu B, Petrasch-Parwez E, Kilimann MW. Neurobeachin: A protein kinase A-anchoring, beige/Chediak-higashi protein homolog implicated in neuronal membrane traffic. J Neurosci 2000 Dec 1;20(23):8551-65

FOR RESEARCH USE ONLY

December 13, 2016