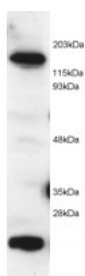


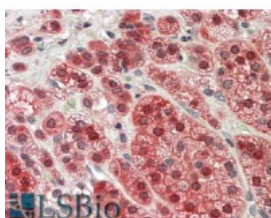


MTR Antibody

CATALOG NUMBER: 45-914



Western Blot (2ug/ml) staining of HeLa lysate (RIPA buffer, 1.4E5 cells per lane). Detected by western blot using chemiluminescence.



Immunohistochemistry (3.8ug/ml) staining of paraffin embedded Human Adrenal Gland. Steamed antigen retrieval with citrate buffer pH 6, AP-staining.

Specifications

SPECIES REACTIVITY:	Human
TESTED APPLICATIONS:	ELISA, IHC-P, WB
APPLICATIONS:	ELISA: antibody detection limit dilution 1:32000. Western Blot: Approx 150kDa band seen in HeLa and Jurkat cell lysates. Recommended for use at 1-3 ug/ml. Immunohistochemistry: In paraffin embedded Human Adrenal Gland shows cytoplasm staining in the cortex. Recommended concentration, 3-5ug/ml.
POSITIVE CONTROL:	1) Cat. No. 1201 - HeLa Cell Lysate
IMMUNOGEN:	MTR antibody was raised against a 14 amino acid synthetic peptide near the C-Terminus of MTR.
HOST SPECIES:	Goat

Properties

PURIFICATION:	MTR antibody was purified from goat serum by ammonium sulphate precipitation followed by antigen affinity chromatography using the immunizing peptide.
PHYSICAL STATE:	Liquid
BUFFER:	MTR antibody is supplied in Tris saline, 0.02% sodium azide, pH 7.3 with 0.5% bovine serum albumin.
CONCENTRATION:	500 ug/mL
STORAGE CONDITIONS:	Aliquot and store at -20°C. Minimize freezing and thawing.
CLONALITY:	Polyclonal
CONJUGATE:	Unconjugated

Additional Info

ALTERNATE NAMES:	MTR, 5-methyltetrahydrofolate-homocysteine methyltransferase, 5-methyltetrahydrofolate-homocysteine methyltransferase 1, MS, HMAG, cblG
ACCESSION NO.:	NP_000245
PROTEIN GI NO.:	169790923
OFFICIAL SYMBOL:	MTR

GENE ID: 4548

Background

REFERENCES: 1) Chen LH, Liu ML, Hwang HY, Chen LS, Korenberg J, Shane B. Human methionine synthase. cDNA cloning, gene localization, and expression. J Biol Chem 1997 Feb 7;272(6):3628-34

FOR RESEARCH USE ONLY

December 13, 2016