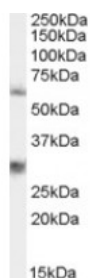




MPP6 Antibody

CATALOG NUMBER: 45-899



Western Blot staining (0.3ug/ml) of 293 lysate (RIPA buffer, 35ug total protein per lane). Primary incubated for 1 hour. Detected by western blot using chemiluminescence.

Specifications

SPECIES REACTIVITY:	Human
TESTED APPLICATIONS:	ELISA, WB
APPLICATIONS:	ELISA: antibody detection limit dilution 1:128000. Western Blot: Approx 60kDa band observed in lysates of cell line HEK293 (calculated MW of 61.1kDa according to NP_057531.2). Recommended concentration: 0.3-1ug/ml. An additional band of unknown identity was also consistently observed at 28kDa. This band
POSITIVE CONTROL:	1) Cat. No. 1210 - 293 Cell Lysate
IMMUNOGEN:	MPP6 antibody was raised against a 13 amino acid synthetic peptide near the N-Terminus of MPP6.
HOST SPECIES:	Goat

Properties

PURIFICATION:	MPP6 antibody was purified from goat serum by ammonium sulphate precipitation followed by antigen affinity chromatography using the immunizing peptide.
PHYSICAL STATE:	Liquid
BUFFER:	MPP6 antibody is supplied in Tris saline, 0.02% sodium azide, pH 7.3 with 0.5% bovine serum albumin.
CONCENTRATION:	500 ug/mL
STORAGE CONDITIONS:	Aliquot and store at -20°C. Minimize freezing and thawing.
CLONALITY:	Polyclonal
CONJUGATE:	Unconjugated

Additional Info

ALTERNATE NAMES:	MPP6, VAM1, p55T, PALS2, VAM-1, membrane protein, palmitoylated 6 (MAGUK p55 subfamily member 6), MAGUK protein p55T, VELI-associated MAGUK 1, protein associated with Lin7 2
ACCESSION NO.:	NP_057531.2
PROTEIN GI NO.:	21361598
OFFICIAL SYMBOL:	MPP6

GENE ID: 51678

Background

REFERENCES: 1) Kamberov E, Makarova O, Roh M, Liu A, Karnak D, Straight S, Margolis B. Molecular cloning and characterization of Pals, proteins associated with mLin-7. J Biol Chem. 2000 Apr 14;275(15):11425-31.

FOR RESEARCH USE ONLY

December 13, 2016