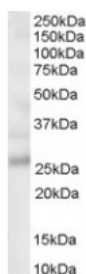




MOG Antibody

CATALOG NUMBER: 45-893



Western Blot staining (0.03ug/ml) of Human Brain lysate (RIPA buffer, 30ug total protein per lane). Primary incubated for 1 hour. Detected by western blot using chemiluminescence.

Specifications

SPECIES REACTIVITY:	Human
TESTED APPLICATIONS:	ELISA, WB
APPLICATIONS:	ELISA: antibody detection limit dilution 1:16000. Western Blot: Approx 26kDa band observed in Human Brain lysates (calculated MW of 25.4kDa according to NP_001008229, isoform a3). Recommended concentration: 0.03-1ug/ml.
POSITIVE CONTROL:	1) Cat. No. 1303 - Human Brain Tissue Lysate
SPECIFICITY:	This antibody is expected to recognise NP_996532.2 (isf a1), NP_996535.2 (isf a2) and NP_001008229.1 (isf a3)
IMMUNOGEN:	MOG antibody was raised against a 12 amino acid synthetic peptide near the C-Terminus of MOG.
HOST SPECIES:	Goat

Properties

PURIFICATION:	MOG antibody was purified from goat serum by ammonium sulphate precipitation followed by antigen affinity chromatography using the immunizing peptide.
PHYSICAL STATE:	Liquid
BUFFER:	MOG antibody is supplied in Tris saline, 0.02% sodium azide, pH 7.3 with 0.5% bovine serum albumin.
CONCENTRATION:	500 ug/mL
STORAGE CONDITIONS:	Aliquot and store at -20°C. Minimize freezing and thawing.
CLONALITY:	Polyclonal
CONJUGATE:	Unconjugated

Additional Info

ALTERNATE NAMES:	MOG, MGC26137, myelin oligodendrocyte glycoprotein, BTN6, BTNL11, MOGIG2, NRCLP7
ACCESSION NO.:	NP_002424, NP_996532, NP_001008229, NP_996535
PROTEIN GI NO.:	56788385

OFFICIAL SYMBOL: MOG

GENE ID: 4340

Background

REFERENCES: 1) Zai G, King N, Wigg K, Couto J, Wong GW, Honer WG, Barr CL, Kennedy JL. Genetic study of the myelin oligodendrocyte glycoprotein (MOG) gene in schizophrenia. *Genes Brain Behav.* 2005 Feb;4(1):2-9.

FOR RESEARCH USE ONLY

December 13, 2016