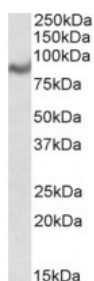


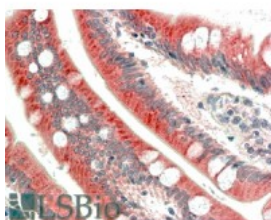


MIC1 Antibody

CATALOG NUMBER: 45-886



Western Blot (1ug/ml) staining of Human Breast lysate (35ug protein in RIPA buffer). Primary incubation was 1 hour. Detected by chemiluminescence.



Immunohistochemistry (5ug/ml) staining of paraffin embedded Human Small Intestine. Steamed antigen retrieval with citrate buffer pH 6, AP-staining.

Specifications

SPECIES REACTIVITY:	Human
TESTED APPLICATIONS:	ELISA, IHC-P, WB
APPLICATIONS:	ELISA: antibody detection limit dilution 1:32000. Western Blot: Approx 80kDa band observed in Human Breast lysates (calculated MW of 75.0kDa according to NP_037458.3). Recommended concentration: 1-3ug/ml. Immunohistochemistry: In paraffin embedded Small Intestine shows textured cytoplasm staining in of the enterocytes. Recommended concentration, 5-2=10ug/ml.
IMMUNOGEN:	MIC1 antibody was raised against a 15 amino acid synthetic peptide near the internal region of MIC1.
HOST SPECIES:	Goat

Properties

PURIFICATION:	MIC1 antibody was purified from goat serum by ammonium sulphate precipitation followed by antigen affinity chromatography using the immunizing peptide.
PHYSICAL STATE:	Liquid
BUFFER:	MIC1 antibody is supplied in Tris saline, 0.02% sodium azide, pH 7.3 with 0.5% bovine serum albumin.
CONCENTRATION:	500 ug/mL
STORAGE CONDITIONS:	Aliquot and store at -20°C. Minimize freezing and thawing.
CLONALITY:	Polyclonal
CONJUGATE:	Unconjugated

Additional Info

ALTERNATE NAMES:	C18orf8, chromosome 18 open reading frame 8, FLJ23453, HsT2591, MIC1, colon cancer associated protein Mic1, colon cancer-associated protein Mic1
ACCESSION NO.:	NP_037458.3
PROTEIN GI NO.:	89242141
OFFICIAL SYMBOL:	C18orf8
GENE ID:	29919

Background

REFERENCES: 1) Olsen JV, Blagoev B, Gnäd F, Macek B, Kumar C, Mortensen P, Mann M Global, in vivo, and site-specific phosphorylation dynamics in signaling networks. Cell. 2006 Nov 3;127(3):635-48.

FOR RESEARCH USE ONLY

December 13, 2016