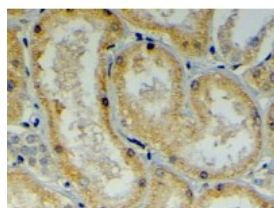




MDG1 Antibody

CATALOG NUMBER: 45-877



Immunohistochemistry (4ug/ml) staining of
paraffin embedded Human Kidney.
Steamed antigen retrieval with citrate
buffer pH 6, HRP-staining.

Specifications

SPECIES REACTIVITY:	Human
TESTED APPLICATIONS:	ELISA, IHC-P
APPLICATIONS:	ELISA: antibody detection limit dilution 1:4000. Western Blot: Preliminary experiments gave no signal but low background in A459 and Human Skeletal Muscle extracts at up to 1ug/ml. We would appreciate any feedback from people in the field - have any results been reported with other antibodies/lysates Immunohistochemistry: In paraffin embedded Human Kidney shows ER staining in PCT. Recommended concentration, 4-6ug/ml.
IMMUNOGEN:	MDG1 antibody was raised against a 14 amino acid synthetic peptide near the C-Terminus of MDG1.
HOST SPECIES:	Goat

Properties

PURIFICATION:	MDG1 antibody was purified from goat serum by ammonium sulphate precipitation followed by antigen affinity chromatography using the immunizing peptide.
PHYSICAL STATE:	Liquid
BUFFER:	MDG1 antibody is supplied in Tris saline, 0.02% sodium azide, pH 7.3 with 0.5% bovine serum albumin.
CONCENTRATION:	500 ug/mL
STORAGE CONDITIONS:	Aliquot and store at -20°C. Minimize freezing and thawing.
CLONALITY:	Polyclonal
CONJUGATE:	Unconjugated

Additional Info

ALTERNATE NAMES:	DNAJB9, MDG1, ERdj4, DKFZP564F1862, DnaJ (Hsp40) homolog, subfamily B, member 9, endoplasmic reticulum DnaJ homolog 4, microvascular endothelial differentiation gene 1, UNQ743/PRO1471
ACCESSION NO.:	NP_036460
PROTEIN GI NO.:	9558755
OFFICIAL SYMBOL:	DNAJB9
GENE ID:	4189

Background

REFERENCES: 1) Prols F, Liehr T, Rinke R, Rautenstrauss B. Assignment of the microvascular endothelial differentiation gene 1 (MDG1) to human chromosome band 14q24.2-->q24.3 by fluorescence in situ hybridization. Cytogenet Cell Genet. 1997;79(1-2):149-50. No abstract available.

FOR RESEARCH USE ONLY

December 13, 2016