

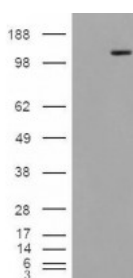


## MAN2A1 Antibody

CATALOG NUMBER: 45-861



Western Blot (0.3ug/ml) staining of Human Placenta lysate (35ug protein in RIPA buffer). Primary incubation was 1 hour. Detected by chemiluminescence.



HEK293 overexpressing Man2A1 and probed with antibody (mock transfection in first lane).

### Specifications

<b>SPECIES REACTIVITY:</b>	Human
<b>TESTED APPLICATIONS:</b>	ELISA, WB
<b>APPLICATIONS:</b>	ELISA: antibody detection limit dilution 1:16000. Western Blot: Approx. 150kDa band observed in Human Placenta lysates (calculated MW of 131kDa according to NP_002363.2). In transfected HEK293 transiently expressing MAN2A1 a band of approx. 98kDa is observed. This band is not observed in the non-transfected control.
<b>POSITIVE CONTROL:</b>	1) Cat. No. 1309 - Human Placenta Lysate
<b>IMMUNOGEN:</b>	MAN2A1 antibody was raised against an 11 amino acid synthetic peptide near the internal region of MAN2A1.
<b>HOST SPECIES:</b>	Goat

### Properties

<b>PURIFICATION:</b>	MAN2A1 antibody was purified from goat serum by ammonium sulphate precipitation followed by antigen affinity chromatography using the immunizing peptide.
<b>PHYSICAL STATE:</b>	Liquid
<b>BUFFER:</b>	MAN2A1 antibody is supplied in Tris saline, 0.02% sodium azide, pH 7.3 with 0.5% bovine serum albumin.
<b>CONCENTRATION:</b>	500 ug/mL
<b>STORAGE CONDITIONS:</b>	Aliquot and store at -20°C. Minimize freezing and thawing.
<b>CLONALITY:</b>	Polyclonal
<b>CONJUGATE:</b>	Unconjugated

### Additional Info

<b>ALTERNATE NAMES:</b>	MAN2A1, mannosidase, alpha, class 2A, member 1, GOLIM7, MANA2, MANII, Golgi alpha-mannosidase II, golgi integral membrane protein 7, alpha type II, mannosyl-oligosaccharide 1, 3-1, 6-alpha-mannosidase
<b>ACCESSION NO.:</b>	NP_002363.2
<b>PROTEIN GI NO.:</b>	51477714
<b>OFFICIAL SYMBOL:</b>	MAN2A1

GENE ID: 4124

---

### Background

**REFERENCES:** 1) Green RS, Stone EL, Tenno M, Lehtonen E, Farquhar MG, Marth JD. Mammalian N-glycan branching protects against innate immune self-recognition and inflammation in autoimmune disease pathogenesis. *Immunity*. 2007 Aug;27(2):308-20. Epub 2007 Aug 2.

---

FOR RESEARCH USE ONLY

December 13, 2016