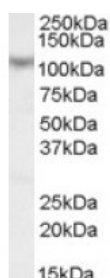


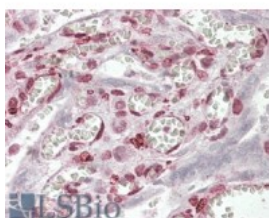


MAML1 Antibody

CATALOG NUMBER: 45-858



Western Blot (0.1ug/ml) staining of Human Skeletal Muscle lysate (35ug protein in RIPA buffer). Primary incubation was 1 hour. Detected by chemiluminescence.



Immunohistochemistry (3.8ug/ml) staining of paraffin embedded Human Placenta. Steamed antigen retrieval with citrate buffer pH 6, AP-staining.

Specifications

SPECIES REACTIVITY:	Human
TESTED APPLICATIONS:	ELISA, IHC-P, WB
APPLICATIONS:	ELISA: antibody detection limit dilution 1:128000. Western Blot: Approx 110kDa band observed in Human Skeletal Muscle lysates (calculated MW of 108kDa according to NP_055572.1). Recommended concentration: 0.1-0.3ug/ml. Immunohistochemistry: In paraffin embedded Human Placenta shows nuclear staining in trophoblasts. Recommended concentration, 2.5-3.8ug/ml.
POSITIVE CONTROL:	1) Cat. No. 1375 - Human Skeletal Muscle Tissue Lysate
IMMUNOGEN:	MAML1 antibody was raised against a 14 amino acid synthetic peptide near the N-Terminus of MAML1.
HOST SPECIES:	Goat

Properties

PURIFICATION:	MAML1 antibody was purified from goat serum by ammonium sulphate precipitation followed by antigen affinity chromatography using the immunizing peptide.
PHYSICAL STATE:	Liquid
BUFFER:	MAML1 antibody is supplied in Tris saline, 0.02% sodium azide, pH 7.3 with 0.5% bovine serum albumin.
CONCENTRATION:	500 ug/mL
STORAGE CONDITIONS:	Aliquot and store at -20°C. Minimize freezing and thawing.
CLONALITY:	Polyclonal
CONJUGATE:	Unconjugated

Additional Info

ALTERNATE NAMES:	MAML1, mastermind-like 1 (Drosophila), Mam1, Mam-1, KIAA0200
ACCESSION NO.:	NP_055572
PROTEIN GI NO.:	7661990
OFFICIAL SYMBOL:	MAML1

GENE ID: 9794

Background

REFERENCES: 1) Wu L, Aster JC, Blacklow SC, Lake R, Artavanis-Tsakonas S, Griffin JD. MAML1, a human homologue of *Drosophila* mastermind, is a transcriptional co-activator for NOTCH receptors. Nat Genet. 2000 Dec;26(4):484-9.

FOR RESEARCH USE ONLY

December 13, 2016