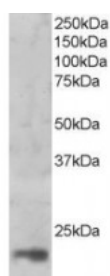




## MAGOH Antibody

CATALOG NUMBER: 45-856



Western Blot (1ug/ml) staining of nuclear HeLa lysate (35ug protein in RIPA buffer). Primary incubation was 1 hour. Detected by chemiluminescence.

### Specifications

<b>SPECIES REACTIVITY:</b>	Human
<b>TESTED APPLICATIONS:</b>	ELISA, WB
<b>APPLICATIONS:</b>	ELISA: antibody detection limit dilution 1:2000. Western Blot: Approx 17kDa band observed in nuclear lysates of cell line HeLa (calculated MW of 17.2kDa according to NP_002361.1). Recommended concentration: 1-3ug/ml. (Data obtained from a previous batch).
<b>POSITIVE CONTROL:</b>	1) Cat. No. 1201 - HeLa Cell Lysate
<b>IMMUNOGEN:</b>	MAGOH antibody was raised against a 12 amino acid synthetic peptide near the C-Terminus of MAGOH.
<b>HOST SPECIES:</b>	Goat

### Properties

<b>PURIFICATION:</b>	MAGOH antibody was purified from goat serum by ammonium sulphate precipitation followed by antigen affinity chromatography using the immunizing peptide.
<b>PHYSICAL STATE:</b>	Liquid
<b>BUFFER:</b>	MAGOH antibody is supplied in Tris saline, 0.02% sodium azide, pH 7.3 with 0.5% bovine serum albumin.
<b>CONCENTRATION:</b>	500 ug/mL
<b>STORAGE CONDITIONS:</b>	Aliquot and store at -20°C. Minimize freezing and thawing.
<b>CLONALITY:</b>	Polyclonal
<b>CONJUGATE:</b>	Unconjugated

### Additional Info

<b>ALTERNATE NAMES:</b>	MAGOH, mago-nashi homolog, proliferation-associated (Drosophila), MAGOHA
<b>ACCESSION NO.:</b>	NP_002361.1
<b>PROTEIN GI NO.:</b>	4505087
<b>OFFICIAL SYMBOL:</b>	MAGOH
<b>GENE ID:</b>	4116

## Background

**REFERENCES:** 1) Zhao XF, Colaizzo-Anas T, Nowak NJ, Shows TB, Elliott RW, Aplan PD. The mammalian homologue of mago nashi encodes a serum-inducible protein. Genomics. 1998 Jan 15;47(2):319-22.

---

**FOR RESEARCH USE ONLY**

December 13, 2016