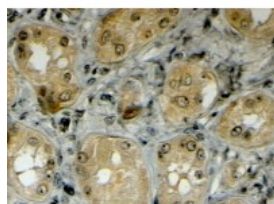




## LRP5 Antibody

CATALOG NUMBER: 45-846



Immunohistochemistry (4ug/ml) staining of  
paraffin embedded Human Kidney.  
Steamed antigen retrieval with citrate  
buffer pH 6, HRP-staining.

### Specifications

<b>SPECIES REACTIVITY:</b>	Human
<b>TESTED APPLICATIONS:</b>	ELISA, IHC-P
<b>APPLICATIONS:</b>	ELISA: antibody detection limit dilution 1:128000. Western Blot: Not suitable for WB. Immunohistochemistry: In paraffin embedded Human Kidney shows primarily nuclear envelope staining in PCT-. Recommended concentration, 3-6ug/ml.
<b>POSITIVE CONTROL:</b>	1) Cat. No. 1307 - Human Pancreas Tissue Lysate
<b>IMMUNOGEN:</b>	LRP5 antibody was raised against a 12 amino acid synthetic peptide near the internal region of LRP5.
<b>HOST SPECIES:</b>	Goat

### Properties

<b>PURIFICATION:</b>	LRP5 antibody was purified from goat serum by ammonium sulphate precipitation followed by antigen affinity chromatography using the immunizing peptide.
<b>PHYSICAL STATE:</b>	Liquid
<b>BUFFER:</b>	LRP5 antibody is supplied in Tris saline, 0.02% sodium azide, pH 7.3 with 0.5% bovine serum albumin.
<b>CONCENTRATION:</b>	500 ug/mL
<b>STORAGE CONDITIONS:</b>	Aliquot and store at -20°C. Minimize freezing and thawing.
<b>CLONALITY:</b>	Polyclonal
<b>CONJUGATE:</b>	Unconjugated

### Additional Info

<b>ALTERNATE NAMES:</b>	LRP5, low density lipoprotein receptor-related protein 5, HGNC:6697, BMND1, HBM, LR3, LRP7, OPPG, OPS, VBCH2, low density lipoprotein receptor-related protein 7, osteoporosis pseudoglioma syndrome
<b>ACCESSION NO.:</b>	NP_002326.1
<b>PROTEIN GI NO.:</b>	4505019
<b>OFFICIAL SYMBOL:</b>	LRP5

GENE ID: 4041

---

## Background

**REFERENCES:** 1) He X, Semenov M, Tamai K, Zeng X. LDL receptor-related proteins 5 and 6 in Wnt/beta-catenin signaling: arrows point the way. Development. 2004 Apr;131(8):1663-77. Review.

---

FOR RESEARCH USE ONLY

December 13, 2016