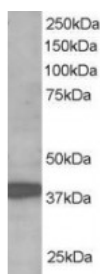




LIRF Antibody

CATALOG NUMBER: 45-841



Western Blot staining (1ug/ml) of human brain lysate (RIPA buffer, 35ug total protein per lane). Primary incubated for 1 hour. Detected by western blot using chemiluminescence.

Specifications

SPECIES REACTIVITY:	Human
TESTED APPLICATIONS:	ELISA, WB
APPLICATIONS:	ELISA: antibody detection limit dilution 1:16000. Western Blot: Approx 40kDa band observed in human brain lysates (predicted MWs of 41kDa and 48kDa according to NP_079512.1 and NP_739575.1). Recommended for use at 1-3ug/ml.
POSITIVE CONTROL:	1) Cat. No. 1303 - Human Brain Tissue Lysate
SPECIFICITY:	This antibody is expected to recognize 2 of the 3 reported isoforms (NP_079512.1 and NP_739575.1 but not NP_739576.1)
IMMUNOGEN:	LIRF antibody was raised against a 14 amino acid synthetic peptide near the C-Terminus of LIRF.
HOST SPECIES:	Goat

Properties

PURIFICATION:	LIRF antibody was purified from goat serum by ammonium sulphate precipitation followed by antigen affinity chromatography using the immunizing peptide.
PHYSICAL STATE:	Liquid
BUFFER:	LIRF antibody is supplied in Tris saline, 0.02% sodium azide, pH 7.3 with 0.5% bovine serum albumin.
CONCENTRATION:	500 ug/mL
STORAGE CONDITIONS:	Aliquot and store at -20°C. Minimize freezing and thawing.
CLONALITY:	Polyclonal
CONJUGATE:	Unconjugated

Additional Info

ALTERNATE NAMES:	ring finger protein 39, HZFW1, HZFW1 protein, LIRF, LTP (long-term potentiation) induced RING finger protein, RNF39, HZFW
ACCESSION NO.:	NP_079512.1, NP_739575.1

PROTEIN GI NO.: 13376844

OFFICIAL SYMBOL: RNF39

GENE ID: 80352

Background

REFERENCES: 1) Matsuo R, Asada A, Fujitani K, Inokuchi K. LIRF, a gene induced during hippocampal long-term potentiation as an immediate-early gene, encodes a novel RING finger protein. Biochem Biophys Res Commun. 2001 Nov 30;289(2):479-84.

FOR RESEARCH USE ONLY

December 13, 2016