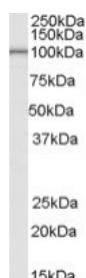




LARP2 Antibody

CATALOG NUMBER: 45-821



Western Blot (0.1ug/ml) staining of Human Testis lysate (35ug protein in RIPA buffer). Primary incubation was 1 hour. Detected by chemiluminescence.

Specifications

| | |
|-----------------------------|---|
| SPECIES REACTIVITY: | Human |
| TESTED APPLICATIONS: | ELISA, WB |
| APPLICATIONS: | ELISA: antibody detection limit dilution 1:128000. Western Blot: Approx 100kDa band observed in Human Testis lysates (calculated MW of 105kDa according to NP_060548.2). Recommended concentration: 0.1-0.3ug/ml. |
| POSITIVE CONTROL: | 1) Cat. No. 1313 - Human Testis Tissue Lysate |
| SPECIFICITY: | This antibody is expected to recognise isoform 1 (NP_060548.2) only. |
| IMMUNOGEN: | LARP2 antibody was raised against a 14 amino acid synthetic peptide near the internal region of LARP2. |
| HOST SPECIES: | Goat |

Properties

| | |
|----------------------------|--|
| PURIFICATION: | LARP2 antibody was purified from goat serum by ammonium sulphate precipitation followed by antigen affinity chromatography using the immunizing peptide. |
| PHYSICAL STATE: | Liquid |
| BUFFER: | LARP2 antibody is supplied in Tris saline, 0.02% sodium azide, pH 7.3 with 0.5% bovine serum albumin. |
| CONCENTRATION: | 500 ug/mL |
| STORAGE CONDITIONS: | Aliquot and store at -20°C. Minimize freezing and thawing. |
| CLONALITY: | Polyclonal |
| CONJUGATE: | Unconjugated |

Additional Info

| | |
|-------------------------|--|
| ALTERNATE NAMES: | LARP2, La ribonucleoprotein domain family, member 2, DKFZp686L13217, MGC117277, MGC75174, La ribonucleoprotein domain family member 2, LARP2 |
| ACCESSION NO.: | NP_060548.2 |
| PROTEIN GI NO.: | 30061567 |
| OFFICIAL SYMBOL: | LARP2 |

GENE ID: 55132

Background

REFERENCES: 1) Wolin SL, Cedervall T. The La protein. Annu Rev Biochem. 2002;71:375-403. Epub 2001 Nov 9. Review.

FOR RESEARCH USE ONLY

December 13, 2016