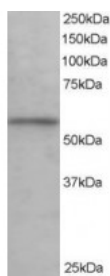


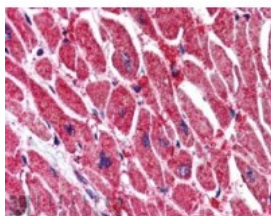


KPNA3 Antibody

CATALOG NUMBER: 45-813



Western Blot staining (0.1ug/ml) of Human Testis lysate (RIPA buffer, 35ug total protein per lane). Primary incubated for 1 hour. Detected by western blot using chemiluminescence.



Immunohistochemistry (5ug/ml) staining of paraffin embedded Human Heart. Steamed antigen retrieval with citrate buffer pH 6, AP-staining.

Specifications

SPECIES REACTIVITY:	Human, Mouse, Rat
TESTED APPLICATIONS:	ELISA, ICC, IF, IHC-P, IP, WB
APPLICATIONS:	ELISA: antibody detection limit dilution 1:32000. Western Blot: Approx 55-60kDa band observed in Human Testis and Kidney lysates (predicted size of approx. 58kDa according to NP_002258). Recommended for use at 0.1-0.5ug/ml Immunohistochemistry: In paraffin embedded Human Heart shows strong pixulate staining of myocardial fibres in transverse section. Recommended concentration, 5-10ug/ml. Immunoprecipitation: This antibody has been successfully used in IP from C2C12 cells as described in the following paper: Huenniger et al, Cell Mol Life Sci. 2010 Sep;67(18): 3187-96; PMID: 20454918. ICC/IF: This anti
POSITIVE CONTROL:	1) Cat. No. 1313 - Human Testis Tissue Lysate
IMMUNOGEN:	KPNA3 antibody was raised against a 13 amino acid synthetic peptide near the C-Terminus of KPNA3.
HOST SPECIES:	Goat

Properties

PURIFICATION:	KPNA3 antibody was purified from goat serum by ammonium sulphate precipitation followed by antigen affinity chromatography using the immunizing peptide.
PHYSICAL STATE:	Liquid
BUFFER:	KPNA3 antibody is supplied in Tris saline, 0.02% sodium azide, pH 7.3 with 0.5% bovine serum albumin.
CONCENTRATION:	500 ug/mL
STORAGE CONDITIONS:	Aliquot and store at -20°C. Minimize freezing and thawing.
CLONALITY:	Polyclonal
CONJUGATE:	Unconjugated

Additional Info

ALTERNATE NAMES:	KPNA3, karyopherin alpha 3 (importin alpha 4), RP11-432M24.3, IPOA4, SRP1gamma, SRP4, hSRP1, importin alpha 4, importin-alpha-Q2, karyopherin alpha 3, QIP2
-------------------------	---

ACCESSION NO.: NP_002258

PROTEIN GI NO.: 34485722

OFFICIAL SYMBOL: KPNA3

GENE ID: 3839

Background

REFERENCES: 1) Kohler M, Ansieau S, Prehn S, Leutz A, Haller H, Hartmann E. Cloning of two novel human importin-alpha subunits and analysis of the expression pattern of the importin-alpha protein family. FEBS Lett. 1997 Nov 3;417(1):104-8.

FOR RESEARCH USE ONLY

December 13, 2016