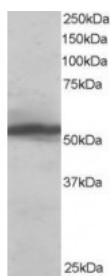




## KPNA2 Antibody

CATALOG NUMBER: 45-812



Western Blot staining (0.1ug/ml) of HeLa lysate (RIPA buffer, 35ug total protein per lane). Primary incubated for 1 hour. Detected by western blot using chemiluminescence.



Immunofluorescence staining (top panel and green) of 4% formaldehyde-fixed HeLa with endogenously expressed HistoneH2B-GFP fusion as DNA marker (mid panel and red). Data kindly provided by Francisco Iborra, MRC Mol. Haematol. Unit, Oxford.

### Specifications

<b>SPECIES REACTIVITY:</b>	Human
<b>TESTED APPLICATIONS:</b>	ELISA, IF, WB
<b>APPLICATIONS:</b>	ELISA: antibody detection limit dilution 1:8000. Western Blot: Approx 55kDa band observed in lysates of HeLa (calculated MW of 57.9kDa according to NP_002257.1). Recommended for use at 1-3ug/ml Immunofluorescence: In 4% formaldehyde-fixed HeLa staining is mostly cytoplasmic, with some nuclear staining and clear nuclear pore staining.
<b>POSITIVE CONTROL:</b>	1) Cat. No. 1201 - HeLa Cell Lysate
<b>IMMUNOGEN:</b>	KPNA2 antibody was raised against a 12 amino acid synthetic peptide near the C-Terminus of KPNA2.
<b>HOST SPECIES:</b>	Goat

### Properties

<b>PURIFICATION:</b>	KPNA2 antibody was purified from goat serum by ammonium sulphate precipitation followed by antigen affinity chromatography using the immunizing peptide.
<b>PHYSICAL STATE:</b>	Liquid
<b>BUFFER:</b>	KPNA2 antibody is supplied in Tris saline, 0.02% sodium azide, pH 7.3 with 0.5% bovine serum albumin.
<b>CONCENTRATION:</b>	500 ug/mL
<b>STORAGE CONDITIONS:</b>	Aliquot and store at -20°C. Minimize freezing and thawing.
<b>CLONALITY:</b>	Polyclonal
<b>CONJUGATE:</b>	Unconjugated

### Additional Info

<b>ALTERNATE NAMES:</b>	KPNA2, QIP2, RCH1, SRP1alpha, karyopherin alpha 2 (RAG cohort 1, importin alpha 1), RAG cohort 1, importin alpha 1, IPOA1, SRP1
-------------------------	---

**ACCESSION NO.:** NP\_002257.1

**PROTEIN GI NO.:** 4504897

**OFFICIAL SYMBOL:** KPNA2

**GENE ID:** 3838

### Background

**REFERENCES:** 1) Cuomo CA, Kirch SA, Gyuris J, Brent R, Oettinger MA. Rch1, a protein that specifically interacts with the RAG-1 recombination-activating protein. Proc Natl Acad Sci USA. 1994 Jun 21;91(13):6156-60.

**FOR RESEARCH USE ONLY**

December 13, 2016