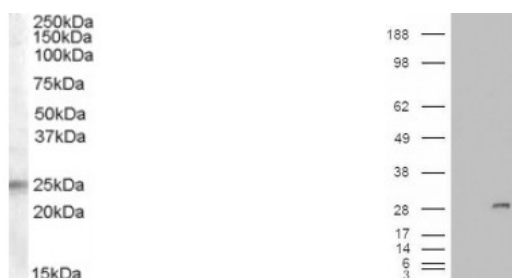




## IGFBP6 Antibody

CATALOG NUMBER: 45-764



Western Blot (0.5ug/ml) staining of Human Adrenal Gland lysate (35ug protein in RIPA buffer). Primary incubation was 1 hour. Detected by chemiluminescence.

HEK293 overexpressing IGFBP6 and probed with antibody (mock transfection in first lane).

### Specifications

#### SPECIES REACTIVITY:

#### TESTED APPLICATIONS:

<b>APPLICATIONS:</b>	ELISA: antibody detection limit dilution 1:32000. Western Blot: Approx. 25kDa band observed in Human Adrenal Gland lysates (calculated MW of 25.3kDa according to NP_002169.1). In transfected HEK293 transiently expressing IGFBP6 a band of approx. 29kDa is observed. This band is not observed in the non-tr
<b>POSITIVE CONTROL:</b>	1) Cat. No. XBL-11050 - Human Adrenal Tissue Lysate
<b>IMMUNOGEN:</b>	IGFBP6 antibody was raised against a 14 amino acid synthetic peptide near the internal region of IGFBP6.
<b>HOST SPECIES:</b>	Goat

### Properties

<b>PURIFICATION:</b>	IGFBP6 antibody was purified from goat serum by ammonium sulphate precipitation followed by antigen affinity chromatography using the immunizing peptide.
<b>PHYSICAL STATE:</b>	Liquid
<b>BUFFER:</b>	IGFBP6 antibody is supplied in Tris saline, 0.02% sodium azide, pH 7.3 with 0.5% bovine serum albumin.
<b>CONCENTRATION:</b>	500 ug/mL
<b>STORAGE CONDITIONS:</b>	Aliquot and store at -20°C. Minimize freezing and thawing.
<b>CLONALITY:</b>	Polyclonal
<b>CONJUGATE:</b>	Unconjugated

### Additional Info

<b>ALTERNATE NAMES:</b>	IGFBP6, insulin-like growth factor binding protein 6, IBP6, IGF binding protein 6
<b>ACCESSION NO.:</b>	NP_002169.1
<b>PROTEIN GI NO.:</b>	11321593
<b>OFFICIAL SYMBOL:</b>	IGFBP6
<b>GENE ID:</b>	3489

## Background

**REFERENCES:** 1) Cheung C, Vesey D, Cotterill A, Douglas M, Gobe G, Nicol D, Johnson D. Altered messenger RNA and protein expressions for insulin-like growth factor family members in clear cell and papillary renal cell carcinomas. *Int J Urol.* 2005 Jan;12(1):17-28.

---

**FOR RESEARCH USE ONLY**

December 13, 2016