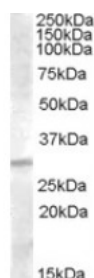




IGFBP4 Antibody

CATALOG NUMBER: 45-763



Western Blot (1ug/ml) staining of Human Liver lysate (35ug protein in RIPA buffer). Primary incubation was 1 hour. Detected by chemiluminescence.

Specifications

SPECIES REACTIVITY:	Human
TESTED APPLICATIONS:	ELISA, WB
APPLICATIONS:	ELISA: antibody detection limit dilution 1:8000. Western Blot: Approx 30kDa band observed in Human Liver lysates (calculated MW of 27.9kDa according to NP_001543.2). Recommended concentration: 1-3ug/ml.
POSITIVE CONTROL:	1) Cat. No. 1304 - Human Liver Tissue Lysate
IMMUNOGEN:	IGFBP4 antibody was raised against a 15 amino acid synthetic peptide near the C-Terminus of IGFBP4.
HOST SPECIES:	Goat

Properties

PURIFICATION:	IGFBP4 antibody was purified from goat serum by ammonium sulphate precipitation followed by antigen affinity chromatography using the immunizing peptide.
PHYSICAL STATE:	Liquid
BUFFER:	IGFBP4 antibody is supplied in Tris saline, 0.02% sodium azide, pH 7.3 with 0.5% bovine serum albumin.
CONCENTRATION:	500 ug/mL
STORAGE CONDITIONS:	Aliquot and store at -20°C. Minimize freezing and thawing.
CLONALITY:	Polyclonal
CONJUGATE:	Unconjugated

Additional Info

ALTERNATE NAMES:	IGFBP4, insulin-like growth factor binding protein 4, BP-4, HT29-IGFBP, IBP4, IGFBP-4, IGF-binding protein 4, insulin-like growth factor-binding protein 4
ACCESSION NO.:	NP_001543.2
PROTEIN GI NO.:	62243290
OFFICIAL SYMBOL:	IGFBP4
GENE ID:	3487

Background

REFERENCES: 1) Durai R, Davies M, Yang W, Yang SY, Seifalian A, Goldspink G, Winslet M. Biology of insulin-like growth factor binding protein-4 and its role in cancer (review). *Int J Oncol.* 2006 Jun;28(6):1317-25. Review.

FOR RESEARCH USE ONLY

December 13, 2016