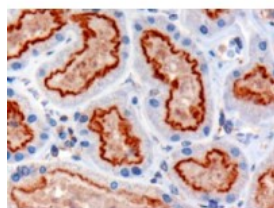




## IFT88 Antibody

CATALOG NUMBER: 45-762



Immunohistochemistry (3ug/ml) staining of  
paraffin embedded Human Kidney.  
Microwaved antigen retrieval with  
Tris/EDTA buffer pH9, HRP-staining.

### Specifications

<b>SPECIES REACTIVITY:</b>	Human, Mouse
<b>TESTED APPLICATIONS:</b>	ELISA, IF, IHC-P
<b>APPLICATIONS:</b>	ELISA: antibody detection limit dilution 1:32000. Western Blot: Preliminary experiments in Human Kidney, Liver and Lung lysates gave no specific signal but low background (at antibody concentration up to 1ug/ml). We would appreciate any feedback from people in the field - have any results been reported Immunohistochemistry: In paraffin embedded Human Kidney shows staining of the brush border in PCT. Recommended concentration, 3ug/ml. Immunofluorescence: This antibody has been successfully used in IF for mouse nose and lungs as described in the following paper: Miyoshi et al, FASEB J. 2009 Oct; 23(10):3289-97; PMID: 19470799.
<b>POSITIVE CONTROL:</b>	1) Cat. No. 1305 - Human Kidney Tissue Lysate 2) Cat. No. 10-401 - Human Kidney Tissue Slide
<b>SPECIFICITY:</b>	This antibody is expected to recognise both reported isoforms (NP_783195.2; NP_006522.2)
<b>IMMUNOGEN:</b>	IFT88 antibody was raised against a 13 amino acid synthetic peptide near the C-Terminus of IFT88.
<b>HOST SPECIES:</b>	Goat

### Properties

<b>PURIFICATION:</b>	IFT88 antibody was purified from goat serum by ammonium sulphate precipitation followed by antigen affinity chromatography using the immunizing peptide.
<b>PHYSICAL STATE:</b>	Liquid
<b>BUFFER:</b>	IFT88 antibody is supplied in Tris saline, 0.02% sodium azide, pH 7.3 with 0.5% bovine serum albumin.
<b>CONCENTRATION:</b>	500 ug/mL
<b>STORAGE CONDITIONS:</b>	Aliquot and store at -20°C. Minimize freezing and thawing.
<b>CLONALITY:</b>	Polyclonal
<b>CONJUGATE:</b>	Unconjugated

### Additional Info

<b>ALTERNATE NAMES:</b>	IFT88, TTC10, tetratricopeptide repeat domain 10, HGNC:20606, D13S1056E, DAF19, IFT88, MGC26259,
-------------------------	--

RP11-172H24.2, TG737, hTg737, TPR repeat protein 10, polaris, Probe hTg737 (polycystic kidney disease, autosomal recessive), Tg737 protein, intraflagellar transport 88 homolog, recessive polycystic kidney disease protein Tg737 homolog

ACCESSION NO.:	NP_783195.2, NP_006522.2
PROTEIN GI NO.:	28558993
OFFICIAL SYMBOL:	IFT88
GENE ID:	8100

#### Background

REFERENCES: 1) Vogel G. News focus: Betting on cilia. Science. 2005 Oct 14;310(5746):216-8.

FOR RESEARCH USE ONLY

December 13, 2016