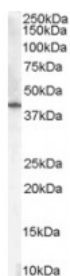


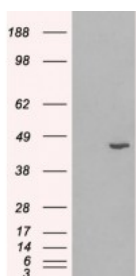


HSD3B1 Antibody

CATALOG NUMBER: 45-749



Western Blot (0.01ug/ml) staining of Human Placenta lysate (35ug protein in RIPA buffer). Primary incubation was 1 hour. Detected by chemiluminescence.



HEK293 overexpressing Human HSD3B1 and probed with antibody (mock transfection in first lane).

Specifications

| | |
|-----------------------------|---|
| SPECIES REACTIVITY: | Human |
| TESTED APPLICATIONS: | ELISA, WB |
| APPLICATIONS: | ELISA: antibody detection limit dilution 1:128000. Western Blot: Approx 40kDa band observed in Human Placenta lysates (calculated MW of 42.3kDa according to NP_000853.1). In transfected HEK293 transiently expressing Human HSD3B1 a band of approx. 45kDa is observed. This band is not observed in the non-tr |
| POSITIVE CONTROL: | 1) Cat. No. 1309 - Human Placenta Lysate |
| IMMUNOGEN: | HSD3B1 antibody was raised against a 12 amino acid synthetic peptide near the C-Terminus of HSD3B1. |
| HOST SPECIES: | Goat |

Properties

| | |
|----------------------------|---|
| PURIFICATION: | HSD3B1 antibody was purified from goat serum by ammonium sulphate precipitation followed by antigen affinity chromatography using the immunizing peptide. |
| PHYSICAL STATE: | Liquid |
| BUFFER: | HSD3B1 antibody is supplied in Tris saline, 0.02% sodium azide, pH 7.3 with 0.5% bovine serum albumin. |
| CONCENTRATION: | 500 ug/mL |
| STORAGE CONDITIONS: | Aliquot and store at -20°C. Minimize freezing and thawing. |
| CLONALITY: | Polyclonal |
| CONJUGATE: | Unconjugated |

Additional Info

| | |
|-------------------------|---|
| ALTERNATE NAMES: | HSD3B1, hydroxy-delta-5-steroid dehydrogenase, 3 beta- and steroid delta-isomerase 1, HGNC:5217, HSD3B, HSD3B3, Hydroxy-delta-5-steroid dehydrogenase, 3 beta- and steroid hydroxy-delta-5-steroid dehydrogenase, 3 beta-and steroid delta-isomerase 1, 3BH, HSDB3A |
| ACCESSION NO.: | NP_000853.1 |
| PROTEIN GI NO.: | 4504507 |
| OFFICIAL SYMBOL: | HSD3B1 |

| | |
|-----------------|------|
| GENE ID: | 3283 |
|-----------------|------|

Background

REFERENCES: 1) Chang BL, Zheng SL, Hawkins GA, Isaacs SD, Wiley KE, Turner A, Carpten JD, Bleecker ER, Walsh PC, Trent JM, Meyers DA, Isaacs WB, Xu J. Joint effect of HSD3B1 and HSD3B2 genes is associated with hereditary and sporadic prostate cancer susceptibility. Cancer Res. 2002 Mar 15;62(6):1784-9.

FOR RESEARCH USE ONLY

December 13, 2016