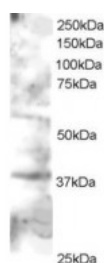


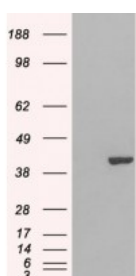


GRAP2 Antibody

CATALOG NUMBER: 45-705



Western Blot staining (0.5ug/ml) of Jurkat lysate (RIPA buffer, 30ug total protein per lane). Primary incubated for 1 hour. Detected by western blot using chemiluminescence.



HEK293 overexpressing GRAP2 and probed with antibody (mock transfection in first lane).

Specifications

SPECIES REACTIVITY:	Human
TESTED APPLICATIONS:	ELISA, WB
APPLICATIONS:	ELISA: antibody detection limit dilution 1:32000. Western Blot: Approx 38kDa band observed lysates of cell line Jurkat (calculated MW of 37.9kDa according to NP_004801.1). In transfected HEK293 transiently expressing GRAP2 a band of approx. 40kDa is observed. This band is not observed in the non-transfected.
POSITIVE CONTROL:	1) Cat. No. 1205 - Jurkat Cell Lysate
IMMUNOGEN:	GRAP2 antibody was raised against a 13 amino acid synthetic peptide near the C-Terminus of GRAP2.
HOST SPECIES:	Goat

Properties

PURIFICATION:	GRAP2 antibody was purified from goat serum by ammonium sulphate precipitation followed by antigen affinity chromatography using the immunizing peptide.
PHYSICAL STATE:	Liquid
BUFFER:	GRAP2 antibody is supplied in Tris saline, 0.02% sodium azide, pH 7.3 with 0.5% bovine serum albumin.
CONCENTRATION:	500 ug/mL
STORAGE CONDITIONS:	Aliquot and store at -20°C. Minimize freezing and thawing.
CLONALITY:	Polyclonal
CONJUGATE:	Unconjugated

Additional Info

ALTERNATE NAMES:	GRAP2, P38, GADS, GRID, GRPL, GrbX, Mona, GRB2L, GRBLG, Grf40, GRAP-2, GRB2-related adaptor protein 2, GRB-2-like protein, SH3-SH2-SH3 adaptor molecule, growth factor receptor-binding protein, GRB2-related protein with insert domain, hematopoietic cell-associated adaptor protein GRPL, growth factor receptor-bound protein 2-related adaptor protein 2
ACCESSION NO.:	NP_004801.1

PROTEIN GI NO.: 4758476

OFFICIAL SYMBOL: GRAP2

GENE ID: 9402

Background

REFERENCES: 1) Qiu M, Hua S, Agrawal M, Li G, Cai J, Chan E, Zhou H, Luo Y, Liu M. Molecular cloning and expression of human grap-2, a novel leukocyte-specific SH2- and SH3-containing adaptor-like protein that binds to gab-1. Biochem Biophys Res Commun. 1998 Dec 18;253(2):443-7.

FOR RESEARCH USE ONLY

December 13, 2016