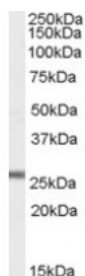


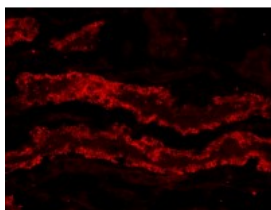


## GPX3 Antibody

CATALOG NUMBER: 45-699



Western Blot (1ug/ml) staining of Mouse Heart lysate (35ug protein in RIPA buffer). Primary incubation was 1 hour. Detected by chemiluminescence.



Immunohistochemistry (20ug/ml) staining of PFA-perfused cryosection of Porcin Kidney. Microwave antigen retrieval with citrate buffer pH 3, CY3-staining. Data obtained from Dr. Hrvoje Brzica, University of Zagreb Immunohistochemistry atia

### Specifications

<b>SPECIES REACTIVITY:</b>	Mouse, Pig
<b>TESTED APPLICATIONS:</b>	ELISA, IHC-P, WB
<b>APPLICATIONS:</b>	ELISA: antibody detection limit dilution 1:1000. Western Blot: Approx 26kDa band observed in Mouse Kidney and Liver lysates (calculated MW of 27.7kDa according to Mouse NP_001077398.1 [isoform 1], 25.4kDa according to Mouse NP_032187.2 [isoform 2] and 25.5kDa according to Human NP_002075.2). Recommend Immunohistochemistry: Frozen sections of Porcin Kidney shows vesicular staining of the cytoplasm in PCT epithelial cells. Recommended concentration, 20ug/ml.
<b>POSITIVE CONTROL:</b>	1) Cat. No. 1401 - Mouse Heart Tissue Lysate
<b>SPECIFICITY:</b>	This antibody may cross-react with epididymis-specific GPX5 and olfactory epithelium-specific GPX6
<b>IMMUNOGEN:</b>	GPX3 antibody was raised against a 13 amino acid synthetic peptide near the internal region of GPX3.
<b>HOST SPECIES:</b>	Goat

### Properties

<b>PURIFICATION:</b>	GPX3 antibody was purified from goat serum by ammonium sulphate precipitation followed by antigen affinity chromatography using the immunizing peptide.
<b>PHYSICAL STATE:</b>	Liquid
<b>BUFFER:</b>	GPX3 antibody is supplied in Tris saline, 0.02% sodium azide, pH 7.3 with 0.5% bovine serum albumin.
<b>CONCENTRATION:</b>	500 ug/mL
<b>STORAGE CONDITIONS:</b>	Aliquot and store at -20°C. Minimize freezing and thawing.
<b>CLONALITY:</b>	Polyclonal
<b>CONJUGATE:</b>	Unconjugated

### Additional Info

<b>ALTERNATE NAMES:</b>	GPX3, glutathione peroxidase 3 (plasma), GPx-P, GSHPx-3, GSHPx-P, extracellular glutathione peroxidase,
-------------------------	---

plasma glutathione peroxidase 3, GPXP

**ACCESSION NO.:** NP\_002075.2

**PROTEIN GI NO.:** 6006001

**OFFICIAL SYMBOL:** GPX3

**GENE ID:** 2878

### Background

**REFERENCES:** 1) Chu FF, Esworthy RS, Doroshow JH, Doan K, Liu XF. Expression of plasma glutathione peroxidase in human liver in addition to kidney, heart, lung, and breast in humans and rodents. Blood. 1992 Jun 15;79(12):3233-8.

**FOR RESEARCH USE ONLY**

December 13, 2016